



**SPC BENCHMARK 2™
FULL DISCLOSURE REPORT**

**INFORTREND TECHNOLOGY, INC.
INFORTREND EONSTOR DS 4024B**

SPC-2™ V1.5

**Submitted for Review: February 10, 2017
Submission Identifier: B00080**

First Edition – February 2017

THE INFORMATION CONTAINED IN THIS DOCUMENT IS DISTRIBUTED ON AN AS IS BASIS WITHOUT ANY WARRANTY EITHER EXPRESS OR IMPLIED. The use of this information or the implementation of any of these techniques is the customer's responsibility and depends on the customer's ability to evaluate and integrate them into the customer's operational environment. While each item has been reviewed by Infortrend Technology, Inc. for accuracy in a specific situation, there is no guarantee that the same or similar results will be obtained elsewhere. Customers attempting to adapt these techniques to their own environment do so at their own risk.

This publication was produced in the United States. Infortrend Technology, Inc. may not offer the products, services, or features discussed in this document in other countries, and the information is subject to change with notice. Consult your local Infortrend Technology, Inc. representative for information on products and services available in your area.

© Copyright Infortrend Technology, Inc. 2017. All rights reserved.

Permission is hereby granted to reproduce this document in whole or in part, provided the copyright notice as printed above is set forth in full text on the title page of each item reproduced.

Trademarks

SPC Benchmark 2, SPC-2, SPC-2 MBPS, and SPC-2 Price-Performance are trademarks of the Storage Performance Council. Infortrend, the Infortrend logo, SANWatch and EonStor are trademarks or registered trademarks of Infortrend Technology, Inc. in the United States and other countries. All other brands, trademarks, and product names are the property of their respective owners.

Table of Contents

Note: Each line in the Table of Contents is a hyperlink to the listed item/page.

Audit Certification	viii
Audit Certification (cont.)	ix
Letter of Good Faith	x
Executive Summary	11
Test Sponsor and Contact Information	11
Revision Information and Key Dates	11
Tested Storage Product (TSP) Description	11
SPC-2 Reported Data	12
SPC-2 Reported Data (continued)	13
Storage Capacities, Relationships and Utilization	14
Priced Storage Configuration Pricing	17
Differences between the Tested Storage Configuration and Priced Storage Configuration	17
Priced Storage Configuration Diagram	18
Priced Storage Configuration Components	18
Configuration Information	19
Benchmark Configuration (BC)/Tested Storage Configuration (TSC) Diagram	19
Storage Network Configuration	19
Host System and Tested Storage Configuration Table	19
Benchmark Configuration/Tested Storage Configuration Diagram	20
Host System and Tested Storage Configuration Components	20
Customer Tunable Parameters and Options	21
Tested Storage Configuration (TSC) Creation and Configuration	21
SPC-2 Workload Generator Storage Configuration	21
ASU Pre-Fill	22
SPC-2 Data Repository	23
SPC-2 Storage Capacities and Relationships	23
SPC-2 Storage Capacities	23
SPC-2 Storage Hierarchy Ratios	24
SPC-2 Storage Capacity Charts	24
Storage Capacity Utilization	26
Logical Volume Capacity and ASU Mapping	27
SPC-2 Benchmark Execution Results	28
SPC-2 Tests, Test Phases, Test Run Sequences, and Test Runs	28

Large File Processing Test	30
SPC-2 Workload Generator Commands and Parameters	30
SPC-2 Test Results File	31
SPC-2 Large File Processing Average Data Rates (MB/s)	31
SPC-2 Large File Processing Average Data Rates Graph	32
SPC-2 Large File Processing Average Data Rate per Stream	33
SPC-2 Large File Processing Average Data Rate per Stream Graph	34
SPC-2 Large File Processing Average Response Time.....	35
SPC-2 Large File Processing Average Response Time Graph	36
Large File Processing Test – Write Only Test Phase	37
SPC-2 “Large File Processing/Write Only/1024 KiB Transfer Size” Test Run Data	38
SPC-2 “Large File Processing/Write Only/1024 KiB Transfer Size” Graphs	38
• Average Data Rate – Complete Test Run.....	38
• Average Data Rate – Measurement Interval (MI) Only	38
• Average Data Rate per Stream Average Response Time	38
SPC-2 “Large File Processing/Write Only/256 KiB Transfer Size” Test Run Data	38
SPC-2 “Large File Processing/Write Only/256 KiB Transfer Size” Graphs	38
• Average Data Rate – Complete Test Run.....	38
• Average Data Rate – Measurement Interval (MI) Only	38
• Average Data Rate per Stream	38
• Average Response Time.....	38
Large File Processing Test – Read-Write Test Phase	39
SPC-2 “Large File Processing/Read-Write/1024 KiB Transfer Size” Test Run Data	40
SPC-2 “Large File Processing/Read-Write/1024 KiB Transfer Size” Graphs	40
• Average Data Rate – Complete Test Run.....	40
• Average Data Rate – Measurement Interval (MI) Only	40
• Average Data Rate per Stream	40
• Average Response Time.....	40
SPC-2 “Large File Processing/Read-Write/256 KiB Transfer Size” Test Run Data	40
SPC-2 “Large File Processing/Read-Write/256 KiB Transfer Size” Graphs	40
• Average Data Rate – Complete Test Run.....	40
• Average Data Rate – Measurement Interval (MI) Only	40
• Average Data Rate per Stream	40
• Average Response Time.....	40
Large File Processing Test – Read Only Test Phase	41
SPC-2 “Large File Processing/Read Only/1024 KiB Transfer Size” Test Run Data	42
SPC-2 “Large File Processing/Read Only/1024 KiB Transfer Size” Graphs	42
• Average Data Rate – Complete Test Run.....	42
• Average Data Rate – Measurement Interval (MI) Only	42

• Average Data Rate per Stream	42
• Average Response Time.....	42
SPC-2 “Large File Processing/Read Only/256 KiB Transfer Size” Test Run Data.....	42
SPC-2 “Large File Processing/Read Only/256 KiB Transfer Size” Graphs.....	42
• Average Data Rate – Complete Test Run.....	42
• Average Data Rate – Measurement Interval (MI) Only	42
• Average Data Rate per Stream	42
• Average Response Time.....	42
Large Database Query Test.....	43
SPC-2 Workload Generator Commands and Parameters.....	43
SPC-2 Test Results File	43
SPC-2 Large Database Query Average Data Rates (MB/s)	44
SPC-2 Large Database Query Average Data Rates Graph.....	44
SPC-2 Large Database Query Average Data Rate per Stream	45
SPC-2 Large Database Query Average Data Rate per Stream Graph.....	45
SPC-2 Large Database Query Average Response Time.....	46
SPC-2 Large Database Query Average Response Time Graph	46
Large Database Query Test – 1024 KiB Transfer Size Test Phase	47
SPC-2 “Large Database Query/1024 KiB Transfer Size/4 Outstanding I/Os” Test Run Data	48
SPC-2 “Large Database Query/1024 KiB Transfer Size/4 Outstanding I/Os” Graphs...	48
• Average Data Rate – Complete Test Run.....	48
• Average Data Rate – Measurement Interval (MI) Only	48
• Average Data Rate per Stream	48
• Average Response Time.....	48
SPC-2 “Large Database Query/1024 KiB Transfer Size/1 Outstanding I/O” Test Run Data	48
SPC-2 “Large Database Query/1024 KiB Transfer Size/1 Outstanding I/O” Graphs	48
• Average Data Rate – Complete Test Run.....	48
• Average Data Rate – Measurement Interval (MI) Only	48
• Average Data Rate per Stream	48
• Average Response Time.....	48
Large Database Query Test – 64 KiB Transfer Size Test Phase	49
SPC-2 “Large Database Query/64 KiB Transfer Size/4 Outstanding I/Os” Test Run Data	50
SPC-2 “Large Database Query/64 KiB Transfer Size/4 Outstanding I/Os” Graphs.....	50
• Average Data Rate – Complete Test Run.....	50
• Average Data Rate – Measurement Interval (MI) Only	50
• Average Data Rate per Stream	50
• Average Response Time.....	50

SPC-2 “Large Database Query/64 KiB Transfer Size/1 Outstanding I/O” Test Run Data	50
SPC-2 “Large Database Query/64 KiB Transfer Size/1 Outstanding I/O” Graphs	50
• Average Data Rate – Complete Test Run.....	50
• Average Data Rate – Measurement Interval (MI) Only	50
• Average Data Rate per Stream	50
• Average Response Time.....	50
Video on Demand Delivery Test	51
SPC-2 Workload Generator Commands and Parameters	51
SPC-2 Test Results File	52
SPC-2 Video on Demand Delivery Test Run Data	52
Video on Demand Delivery Test – Test Run Data by Interval.....	53
SPC-2 Video on Demand Delivery Average Data Rate Graph	54
SPC-2 Video on Demand Delivery Average Data Rate per Stream Graph.....	54
SPC-2 Video on Demand Delivery Average Response Time Graph	55
SPC-2 Video on Demand Delivery Maximum Response Time Graph.....	55
Data Persistence Test.....	56
SPC-2 Workload Generator Commands and Parameters	56
Data Persistence Test Results File	56
Data Persistence Test Results.....	57
Priced Storage Configuration Availability Date.....	58
Anomalies or Irregularities	58
Appendix A: SPC-2 Glossary	59
“Decimal” (powers of ten) Measurement Units.....	59
“Binary” (powers of two) Measurement Units.....	59
SPC-2 Data Repository Definitions.....	59
SPC-2 Data Protection Levels	60
SPC-2 Test Execution Definitions	60
I/O Completion Types.....	63
SPC-2 Test Run Components	63
Appendix B: Customer Tunable Parameters and Options.....	64
Appendix C: Tested Storage Configuration (TSC) Creation	65
Appendix D: SPC-2 Workload Generator Storage Commands and Parameter Files	75
ASU Pre-Fill.....	75
Common Commands/Parameters – LFP and LDQ. Tests	75
Large File Processing Test (LFP)	76
Large Database Query Test (LDQ)	77

Video on Demand Delivery (VOD)	78
SPC-2 Persistence Test Run 1 (write phase)	78
SPC-2 Persistence Test Run 2 (read phase)	79
Appendix E: SPC-2 Workload Generator Execution Commands and Parameters	80
ASU Pre-Fill, Large File Processing (LFP) Test, Large Database Query (LDQ) Test, Video on Demand Delivery (VOD) Test and SPC-2 Persistence Test Run 1 (write phase).....	80
SPC2.bat	81
Persist2_run.bat.....	81

AUDIT CERTIFICATION



Jeff Lin
 Infortrend Technology, Inc.
 8F, No. 102, Sec. 3, Jhongshan Rd.
 Jhonge District, New Taipei City 23544, Taiwan

February 7, 2017

The SPC Benchmark 2™ Reported Data listed below for the **Infortrend EonStor DS 4024B** were produced in compliance with the SPC Benchmark 2™ V1.5 Onsite Audit requirements.

SPC Benchmark 2™ 1.5 Reported Data	
Tested Storage Product (TSP) Name: Infortrend EonStor DS 4024B	
Metric	Reported Result
SPC-2 MBPS™	10,030.77
SPC-2 Price-Performance	\$6.80/SPC-2 MBPS™
ASU Capacity	6,379.746 GB
Data Protection Level	Protected 2 (RAID-6)
Total Price (including three-year maintenance)	\$68,216.40
Currency Used	U.S. Dollars
Target Country for availability, sales and support	USA

The following SPC Benchmark 2™ Onsite Audit requirements were reviewed and found compliant with V1.5 of the SPC Benchmark 2™ Specification:

- A Letter of Good Faith, signed by a senior executive.
- The following Data Repository storage items were verified by physical inspection and documentation supplied by Infortrend Technology, Inc.:
 - ✓ Physical Storage Capacity and requirements.
 - ✓ Configured Storage Capacity and requirements.
 - ✓ Addressable Storage Capacity and requirements.
 - ✓ Capacity of each Logical Volume and requirements.
 - ✓ Capacity of the Application Storage Unit (ASU) and requirements.
- The total Application Storage Unit (ASU) Capacity was filled with random data prior to the execution of the SPC-2 Tests.
- An appropriate diagram of the Benchmark Configuration/Tested Storage Configuration.

Gradient Systems, Inc.
 643 Bair Island Road, Suite 103
 Redwood City, CA 94062
AuditService@storageperformance.org
 650.556.9384

AUDIT CERTIFICATION (CONT.)

Infotrend EonStor DS 4024B
SPC-1 Audit Certification

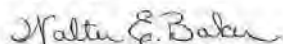
Page 2

- Physical verification of the components to match the above diagram
- Listings and commands to configure the Benchmark Configuration / Tested Storage Configuration.
- There were no customer tunable parameters and options that were changed from default values.
- The following Host System items were verified by physical inspection and documentation supplied by Infotrend Technology, Inc.:
 - ✓ Required Host System configuration information.
 - ✓ The TSC boundary within the Host System.
- The following SPC-2 Workload Generator information was verified by physical inspection and documentation supplied by Infotrend Technology, Inc.:
 - ✓ The presence and version number of the Workload Generator on each Host System.
 - ✓ Commands and parameters used to configure the SPC-2 Workload Generator.
- The execution of each Test, Test Phase, and Test Run was observed and found compliant with all of the requirements and constraints of Clauses 6, 7 and 12 of the SPC-2 Benchmark Specification.
- The Test Results Files and resultant Summary Results Files received from Infotrend Technology, Inc. for each of the following were authentic, accurate, and compliant with all of the requirements and constraints of Clauses 6, 7 and 12 of the SPC Benchmark 2™ Specification:
 - ✓ Data Persistence Test
 - ✓ Large File Processing Test
 - ✓ Large Database Query Test
 - ✓ Video on Demand Delivery Test
- There were no differences between the Tested Storage Configuration and Priced Storage Configuration.
- The submitted pricing information met all of the requirements and constraints of Clause 9 of the SPC Benchmark 2™ Specification.
- The Full Disclosure Report (FDR) met all of the requirements in Clause 10 of the SPC Benchmark 2™ Specification.

Audit Notes:

There were no audit notes or exceptions.

Respectfully,



Walter E. Baker
SPC Auditor

Gradient Systems, Inc.
643 Bair Island Road, Suite 103
Redwood City, CA 94062
AuditService@storageperformance.org
650.556.9384

LETTER OF GOOD FAITH



Infotrend Technology, Inc.



February 7, 2017

Mr. Walter E. Baker
SPC Auditor
Gradient Systems, Inc.
643 Bair Island Road, Suite 103
Redwood City, CA 94063

Subject: SPC-2 Letter of Good Faith for the Infotrend EonStor DS 4024B

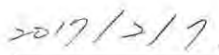
Infotrend Inc. is the SPC-2 Test Sponsor for the above listed product. To the best of our knowledge and belief, the required SPC-2 benchmark results and materials we have submitted for that product are complete, accurate, and in full compliance with V1.5 of the SPC-2 benchmark specification.

In addition, we have reported any items in the Benchmark Configuration and execution of the benchmark necessary to reproduce the reported results even if the items are not explicitly required to be disclosed by the above SPC-2 benchmark specification.

Sincerely,



Thomas Kao
Senior Director
Product Planning Department



EXECUTIVE SUMMARY

Test Sponsor and Contact Information

Test Sponsor and Contact Information	
Test Sponsor Primary Contact	Infortrend Technology, Inc. – http://www.infortrend.com Jeff Lin – Jeff.Lin@infortrend.com 8F, No. 102, Sec. 3, Jhongshan Rd. Jhonge District , New Taipei City 23544, Taiwan Phone: +866 (2) 2226 0126 x7082
Test Sponsor Alternate Contact	Infortrend Technology, Inc. – http://www.infortrend.com Kevin Ko – kevinHW.ko@infortrend.com 8F, No. 102, Sec. 3, Jhongshan Rd. Jhonge District , New Taipei City 23544, Taiwan Phone: +866 (2) 2226 0126 x8086
Auditor	Gradient Systems, Inc, Walter E. Baker – web@GradientSystems.com 643 Bair Island Road, Suite 211 Redwood City, CA 94063 Phone: (650) 556-9380 FAX: (650) 257-7511

Revision Information and Key Dates

Revision Information and Key Dates	
SPC-2 Specification revision number	V1.5
SPC-2 Workload Generator revision number	V1.2
Date Results were first used publicly	February 10, 2017
Date FDR was submitted to the SPC	February 10, 2017
Date the TSC will be available for shipment to customers	currently available
Date the TSC completed audit certification	February 7, 2017

Tested Storage Product (TSP) Description

EonStor DS 4000 systems deliver top-notch performance in their segment, bringing unrivaled power to SMBs. With their unique dual host board design and 12Gb/s SAS interfaces to internal SAS or SATA disk drives, these systems achieve a massive throughput to meet even highly demanding applications such as media editing. They are also extremely scalable and integrate advanced data services such as SSD Cache, automated storage tiering, and self-encrypting drives.

SPC-2 Reported Data

SPC-2 Reported Data consists of three groups of information:

- The following SPC-2 Primary Metrics, which characterize the overall benchmark result:
 - SPC-2 MBPS™
 - SPC-2 Price Performance™
 - Application Storage Unit (ASU) Capacity
- Supplemental data to the SPC-2 Primary Metrics.
 - Total Price
 - Data Protection Level
 - Currency Used
 - Target Country
- Reported Data for each SPC Test: Large File Processing (LFP), Large Database Query (LDQ), and Video on Demand Delivery (VOD) Test.

SPC-2 MBPS™ represents the aggregate data rate, in megabytes per second, of all three SPC-2 workloads: Large File Processing (LFP), Large Database Query (LDQ), and Video on Demand (VOD).

SPC-2 Price-Performance™ is the ratio of **Total Price** to **SPC-2 MBPS™**.

ASU (Application Storage Unit) Capacity represents the total storage capacity available to be read and written in the course of executing the SPC-2 benchmark.

Total Price includes the cost of the Priced Storage Configuration plus three years of hardware maintenance and software support as detailed on page 17.

Data Protection Level of Protected 2 using **RAID-6**, which provides double-parity RAID protection against data loss.

***Protected 2:** The single point of failure of any **component** in the configuration will not result in permanent loss of access to or integrity of the SPC-2 Data Repository.*

Currency Used is formal name for the currency used in calculating the **Total Price** and **SPC-2 Price-Performance™**. That currency may be the local currency of the **Target Country** or the currency of a difference country (*non-local currency*).

The **Target Country** is the country in which the Priced Storage Configuration is available for sale and in which the required hardware maintenance and software support is provided either directly from the Test Sponsor or indirectly via a third-party supplier.

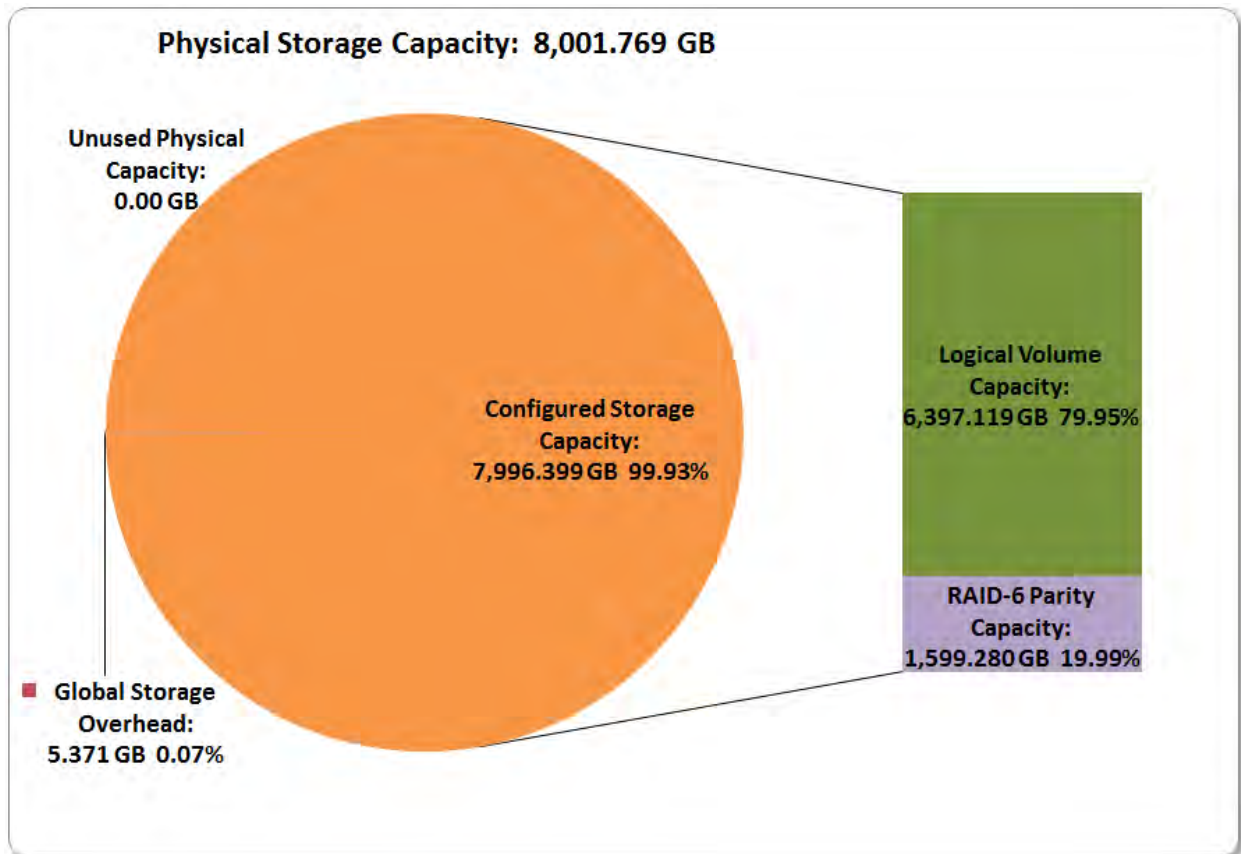
SPC-2 Reported Data (continued)

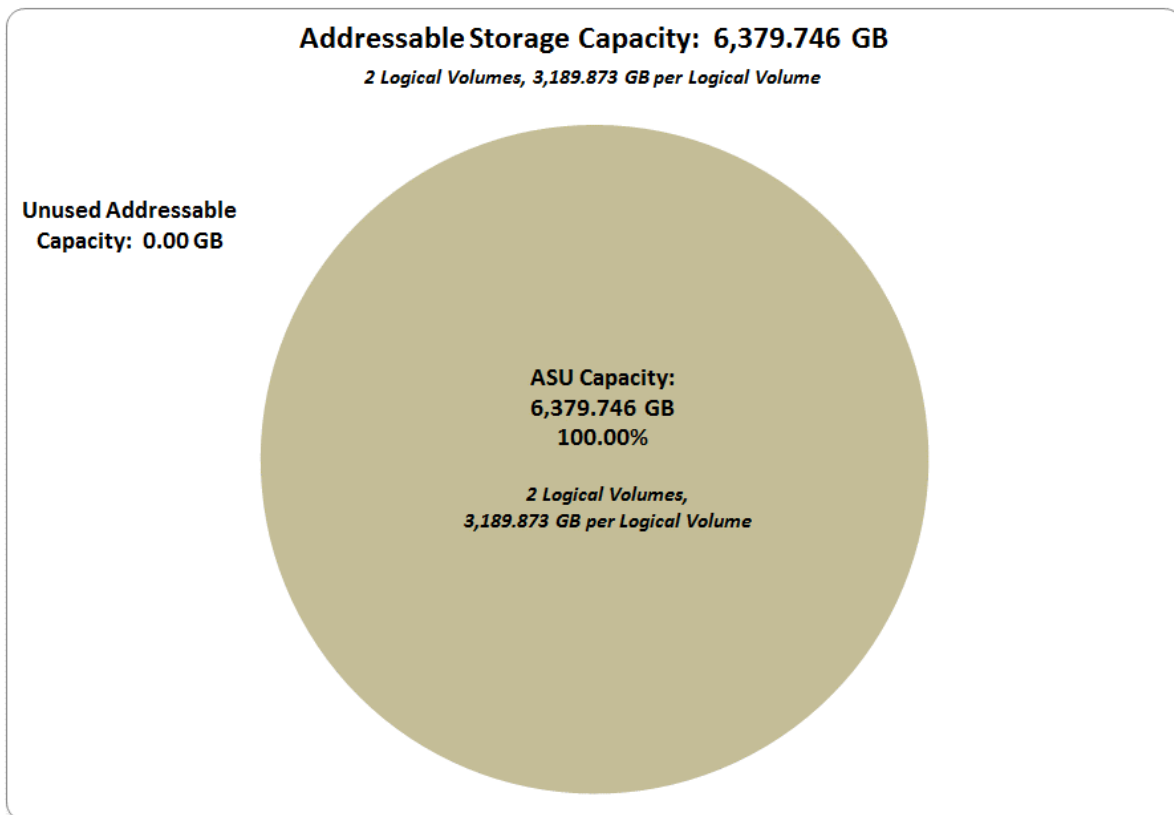
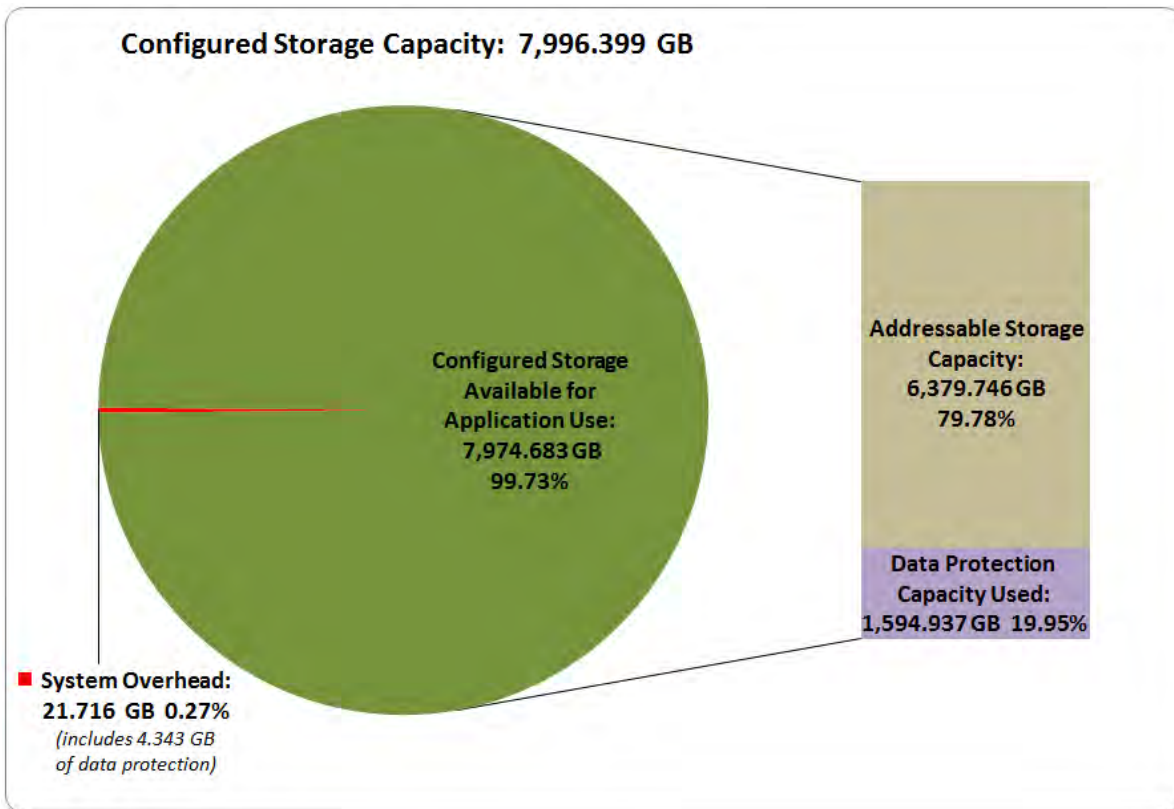
SPC-2 Reported Data				
Infortrend EonStor DS4024 (16 Gb FC)				
SPC-2 MBPS™	SPC-2 Price-Performance	ASU Capacity (GB)	Total Price	Data Protection Level
10,030.77	\$6.80	6,379.746	\$68,216.40	Protected 2 (RAID-6)
<i>The above SPC-2 MBPS™ value represents the aggregate data rate of all three SPC-2 workloads: Large File Processing (LFP), Large Database Query (LDQ), and Video On Demand (VOD)</i>				
Currency Used:		"Target Country":		
U.S. dollars		USA		
SPC-2 Large File Processing (LFP) Reported Data				
	Data Rate (MB/second)	Number of Streams	Data Rate per Stream	Price-Performance
LFP Composite	9,325.44			\$7.32
Write Only:				
1024 KiB Transfer	7,021.76	96	73.14	
256 KiB Transfer	6,717.23	96	69.97	
Read-Write:				
1024 KiB Transfer	10,467.38	96	109.04	
256 KiB Transfer	10,558.37	96	109.98	
Read Only:				
1024 KiB Transfer	10,600.33	96	110.42	
256 KiB Transfer	10,587.57	96	110.29	
<i>The above SPC-2 Data Rate value for LFP Composite represents the aggregate performance of all three LFP Test Phases: (Write Only, Read-Write, and Read Only).</i>				
SPC-2 Large Database Query (LDQ) Reported Data				
	Data Rate (MB/second)	Number of Streams	Data Rate per Stream	Price-Performance
LDQ Composite	10,543.26			\$6.47
1024 KiB Transfer Size				
4 I/Os Outstanding	10,658.07	96	111.02	
1 I/O Outstanding	10,658.35	96	111.02	
64 KiB Transfer Size				
4 I/Os Outstanding	10,430.83	96	108.65	
1 I/O Outstanding	10,425.79	96	108.60	
<i>The above SPC-2 Data Rate value for LDQ Composite represents the aggregate performance of the two LDQ Test Phases: (1024 KiB and 64 KiB Transfer Sizes).</i>				
SPC-2 Video On Demand (VOD) Reported Data				
	Data Rate (MB/second)	Number of Streams	Data Rate per Stream	Price-Performance
	10,223.60	13,000	0.79	\$6.67

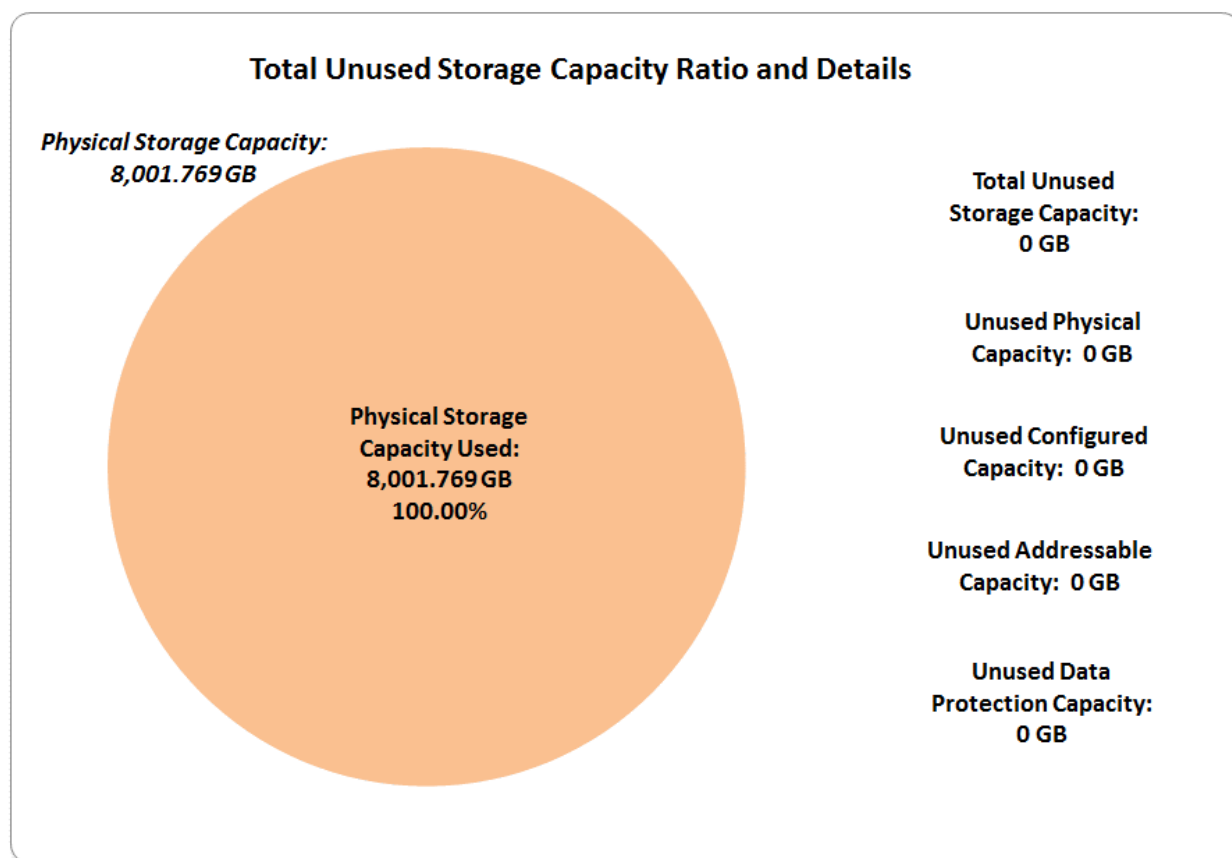
Storage Capacities, Relationships and Utilization

The following four charts and table document the various storage capacities, used in this benchmark, and their relationships, as well as the storage utilization values required to be reported.

The capacity values in each of the following four charts are listed as integer values, for readability, rather than the decimal values listed elsewhere in this document.







SPC-2 Storage Capacity Utilization	
Application Utilization	79.73%
Protected Application Utilization	99.72%
Unused Storage Ratio	0.00%

Application Utilization: ASU Capacity (6,379.746 GB) divided by Physical Storage Capacity (8,001.769 GB).

Protected Application Utilization: ASU Capacity (6,379.746 GB) plus total Data Protection Capacity (1,599.280 GB) minus unused Data Protection Capacity (0.000 GB) divided by Physical Storage Capacity (8,001.769 GB).

Unused Storage Ratio: Total Unused Capacity (0.000 GB) divided by Physical Storage Capacity (8,001.769 GB) and may not exceed 45%.

Detailed information for the various storage capacities and utilizations is available on pages [23-24](#).

Priced Storage Configuration Pricing

P/N	Description	Quantity	MSRP	Extended Price
DS4024RUCB	EonStor DS 4000 2U/24bay, high IOPS, dual redundant controller subsystem including 4x12Gb/s SAS EXP. ports, 4x1G iSCSI ports +4x host board slot(s), 4x8GB, 2x(PSU+FAN Module), 2x(SuperCap.+Flash module), 24xHDD trays and 1xRackmount kit	1	13,200.00	13,200.00
RFE16G1HIO4-0010	EonStor Converged host board	4	1,260.00	5,040.00
HESTSS3040-00301	Toshiba Enterprise 2.5" SAS 12Gb/s MLC SSD, 400GB	20	1,445.00	28,900.00
US-PSPHD-3Y304	3 Years PSP 4 - 24/7 Help Desk & Engineer Onsite Services within 4 hours. Parts are prepared by customer (HDDs included)	1	3,354.00	3,354.00
9270CFCCAB06-0010	Optical FC cable, LC-LC, MM-50/125, Duplex, LSZH, O.D.=1.8mm*2, 10 Meters	8	54.00	432.00
9370CSFP16G-0010	16Gb/s Fibre Channel SFP optical transceiver, LC, wave-length 850nm, multi-mode	16	238.00	3,808.00
DDR4RECMF-0010	16GB DDR-IV DIM module for ESDS G7i, ESDS 3000/1000/2000 and ESVA x75 subsystems	8	270.00	2,160.00
BH1EMF311-0010	HBA card, LPe16002B, FC-16G, Dual ports, 1 in 1 package	4	1,921.00	7,684.00
	EonStor DS 4024B spare kit including 1 x RAID Controller w/2,1x16GB DDR-III, 1 x EonStor Converged host board , 1 xToshiba Enterprise 2.5" SAS 12Gb/s MLC SSD 400GB, 1 x PSU, 1 x 16Gb/s Fibre Channel SFP, 1 x Optical FC cable	1	11,218.00	11,218.00
	Totals			75,796.00

Description	Extended Price	Discount	Discounted Price
Totals	75,796.00	10%	68,216.40

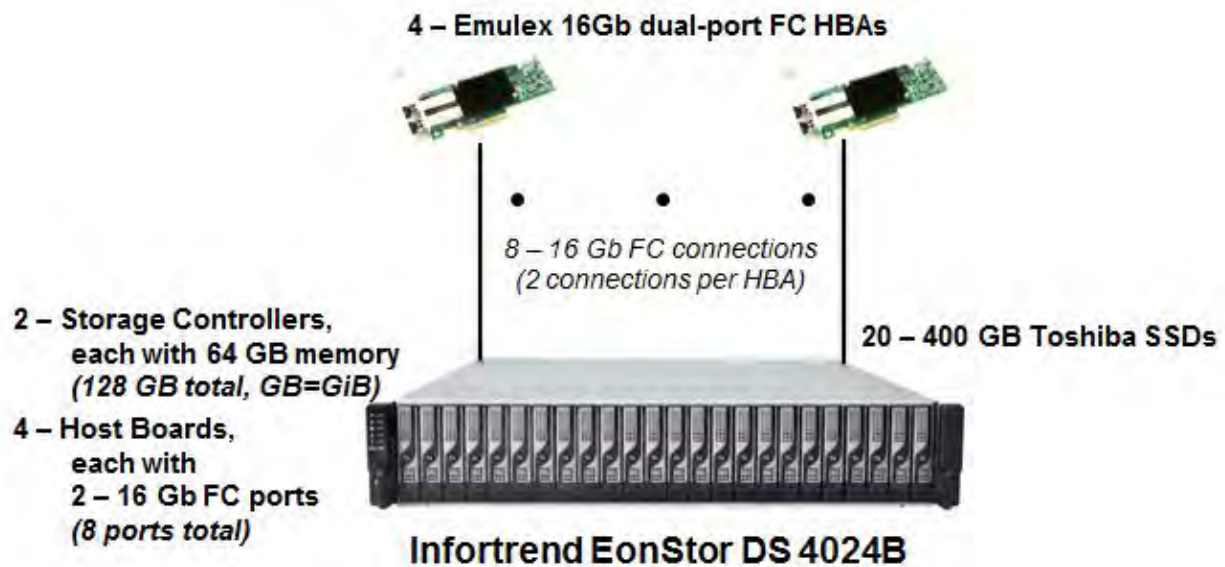
The above pricing includes the following:

- Acknowledgement of new and existing hardware and/or software problems within four hours.
- Onsite presence of a qualified maintenance engineer or provision of a customer replaceable part within four hours of the above acknowledgement for any hardware failure that results in an inoperative Priced Storage Configuration component.

Differences between the Tested Storage Configuration and Priced Storage Configuration

There were no differences between the Tested Storage Configuration and the Priced Storage Configuration.

Priced Storage Configuration Diagram



Priced Storage Configuration Components

Priced Storage Configuration
SANWatch 3.0.h.66
4 – Emulex LPe 16002 dual-port 16 Gbps FC HBAs
Infortrend EonStor DS 4024B 1 – EonStor DS4000 2U/24bay, dual redundant controller subsystem which includes: 128 GiB memory (64 GiB per controller) 4 – EonStor Converged Host Boards (2 – 16 Gb FC ports per board, 8 total and used) 4 – 12 Gb/s SAS EXP ports 20 – 400 GB Toshiba Enterprise 2.5” SAS 12 Gb/s MLC SSDs

CONFIGURATION INFORMATION

This portion of the Full Disclosure Report documents and illustrates the detailed information necessary to recreate the Benchmark Configuration (BC), including the Tested Storage Configuration (TSC), so that the SPC-2 benchmark result produced by the BC may be independently reproduced.

In each of the following sections of this document, the appropriate Full Disclosure Report requirement, from the SPC-2 benchmark specification, is stated in italics followed by the information to fulfill the stated requirement.

Benchmark Configuration (BC)/Tested Storage Configuration (TSC) Diagram

Clause 10.6.6

The FDR will contain a one page BC/TSC diagram that illustrates all major components of the BC/TSC.

The Benchmark Configuration (BC)/Tested Storage Configuration (TSC) is illustrated on page [20 \(Benchmark Configuration \(BC\)/Tested Storage Configuration \(TSC\) Diagram\)](#).

Storage Network Configuration

Clause 10.6.6.1

If a storage network was configured as a part of the Tested Storage Configuration and the Benchmark Configuration described in Clause 10.6.6 contains a high-level illustration of the network configuration, the Executive Summary will contain a one page topology diagram of the storage network as illustrated in Figure 10.11.

The Tested Storage Configuration was configured with direct attached storage and, as such, did not utilize a storage network.

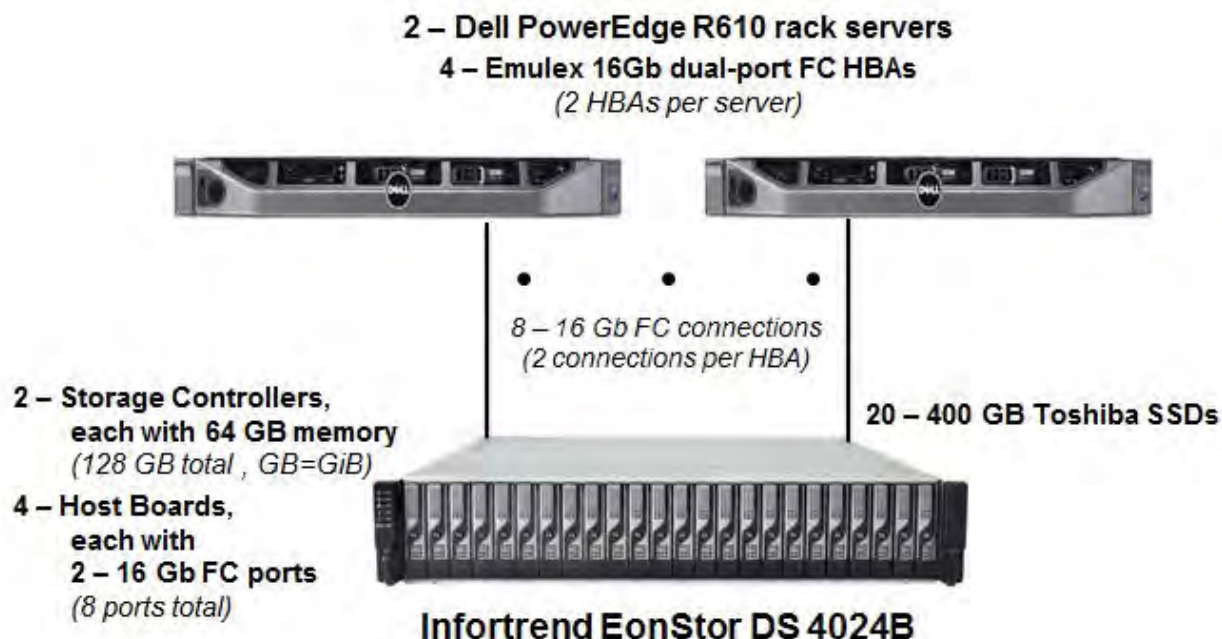
Host System and Tested Storage Configuration Table

Clause 10.6.6.2

The FDR will contain a table that lists the major components of each Host System and the Tested Storage Configuration.

The components that comprise each Host System and the Tested Storage Configuration are listed in the table that appears on page [20 \(Host System and Tested Storage Configuration Components\)](#).

Benchmark Configuration/Tested Storage Configuration Diagram



Host System and Tested Storage Configuration Components

Host Systems
<p>2 – Dell PowerEdge R610 rack servers, each with:</p> <ul style="list-style-type: none"> 2 – Intel® Xeon® 2.13 GHz E5606 processors 4 cores per processor and 8 MB Intel Smart Cache 32 GB main memory Microsoft Windows Server 2008 R2 Enterprise PCI-Express 3.0
Tested Storage Configuration (TSC)
SANWatch 3.0.h.66
4 – Emulex LPe 16002 dual-port 16 Gbps FC HBAs
<p>Infortrend EonStor DS 4024B</p> <ul style="list-style-type: none"> 1 – EonStor DS4000 2U/24bay, dual redundant controller subsystem which includes: <ul style="list-style-type: none"> 128 GiB memory <i>(64 GiB per controller)</i> 4 – EonStor Converged Host Boards <i>(2 – 16 Gb FC ports per board, 8 total and used)</i> 4 – 12 Gb/s SAS EXP ports 20 – 400 GB Toshiba Enterprise 2.5” SAS 12 Gb/s MLC SSDs

Customer Tunable Parameters and Options

Clause 10.6.7.1

All Benchmark Configuration (BC) components with customer tunable parameter and options that have been altered from their default values must be listed in the FDR. The FDR entry for each of those components must include both the name of the component and the altered value of the parameter or option. If the parameter name is not self-explanatory to a knowledgeable practitioner, a brief description of the parameter's use must also be included in the FDR entry.

[Appendix B: Customer Tunable Parameters and Options](#) on page 64 contains the customer tunable parameters and options that have been altered from their default values for this benchmark.

Tested Storage Configuration (TSC) Creation and Configuration

Clause 10.6.7.2

The Full Disclosure Report must include sufficient information to recreate the logical representation of the Tested Storage Configuration (TSC). In addition to customer tunable parameters and options (Clause 10.6.6.1), that information must include, at a minimum:

- A diagram and/or description of the following:
 - All physical components that comprise the TSC. Those components are also illustrated in the BC Configuration Diagram in Clause 10.6.5.7 and the Storage Network Configuration Diagram in Clause 10.6.5.8.
 - The logical representation of the TSC, configured from the above components that will be presented to the SPC-2 Workload Generator.
- Listings of scripts used to create the logical representation of the TSC.
- If scripts were not used, a description of the process used with sufficient detail to recreate the logical representation of the TSC.

[Appendix C: Tested Storage Configuration \(TSC\) Creation](#) on page 65 contains the detailed information that describes how to create and configure the logical TSC.

SPC-2 Workload Generator Storage Configuration

Clause 10.6.7.3

The Full Disclosure Report will include all SPC-2 Workload Generator storage configuration commands and parameters used in the SPC-2 benchmark measurement.

The SPC-2 Workload Generator storage configuration commands and parameters for this measurement appear in [Appendix D: SPC-2 Workload Generator Storage Commands and Parameter](#) Files on page 75.

ASU Pre-Fill

Clause 6.3.3

The SPC-2 ASU is required to be completely filled with specified content prior to the execution of audited SPC-2 Tests. The content is required to consist of random data pattern such as that produced by an SPC recommended tool.

...

Clause 6.3.3.3

The required ASU pre-fill must be executed as the first step in the uninterrupted benchmark execution sequence described in Clause 6.4.2. That uninterrupted sequence will consist of: ASU Pre-Fill, Large File Processing, Large Database Query, Video on Demand Delivery and Persistence Test Run 1. The only exception to this requirement is described in Clause 6.3.3.4.

Clause 6.3.3.4

If approved by the Auditor, the Test Sponsor may complete the required ASU pre-fill prior to the execution of the audited SPC-2 Tests and not as part of the SPC-2 Test execution sequence.

The Auditor will verify the required random data pattern content in the ASU prior to the execution of the audited SPC-2 Tests. If that verification fails, the Test Sponsor is required to reload the specified content to the ASU.

The configuration file used to complete the required ASU pre-fill appears in [Appendix D: SPC-2 Workload Generator Storage Commands and Parameter Files](#) on page [75](#).

SPC-2 DATA REPOSITORY

This portion of the Full Disclosure Report presents the detailed information that fully documents the various SPC-2 storage capacities and mappings used in the Tested Storage Configuration. [SPC-2 Data Repository Definitions](#) on page 59 contains definitions of terms specific to the SPC-2 Data Repository.

In each of the following sections of this document, the appropriate Full Disclosure Report requirement, from the SPC-2 benchmark specification, is stated in italics followed by the information to fulfill the stated requirement.

SPC-2 Storage Capacities and Relationships

Clause 10.6.8.1

Two tables and four charts documenting the storage capacities and relationships of the SPC-2 Storage Hierarchy (Clause 2.1) shall be included in the FDR. ... The capacity value in each chart may be listed as an integer value, for readability, rather than the decimal value listed in the table below.

SPC-2 Storage Capacities

The Physical Storage Capacity consisted of 8,001.769 GB distributed over 20 solid state devices (SSDs) each with a formatted capacity of 400.088 GB. There was 0.000 GB (0.00%) of Unused Storage within the Physical Storage Capacity. Global Storage Overhead consisted of 5.371 GB (0.07%) of the Physical Storage Capacity. There was 0.000 GB (0.00%) of Unused Storage within the Configured Storage Capacity. The Total ASU Capacity utilized 100.00% of the Addressable Storage Capacity resulting in 0.000 GB (0.00%) of Unused Storage within the Addressable Storage Capacity. The Data Protection capacity (*RAID-6*) was 1,599.280 GB of which 1,599.280 GB was utilized. The total Unused Storage was 0.000 GB.

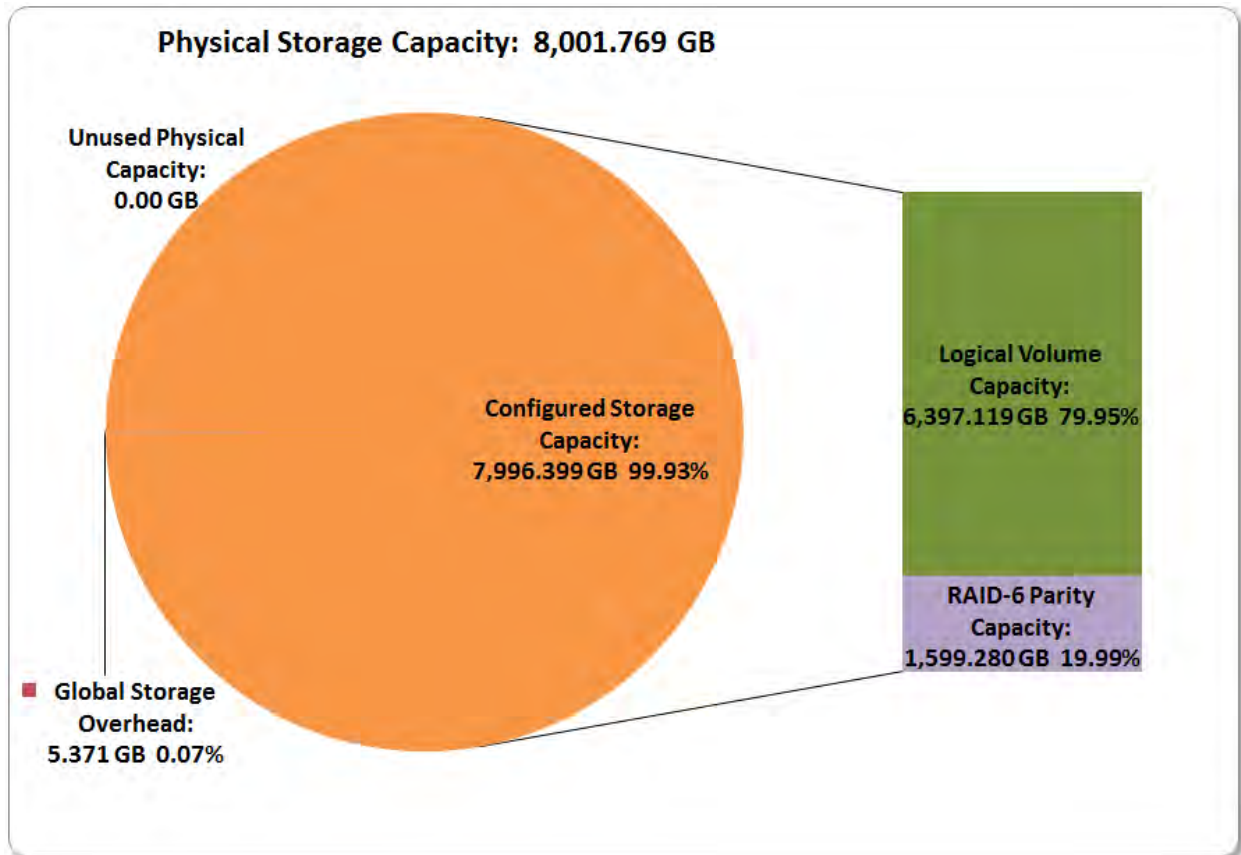
Note: The configured Storage Devices may include additional storage capacity reserved for system overhead, which is not accessible for application use. That storage capacity may not be included in the value presented for Physical Storage Capacity.

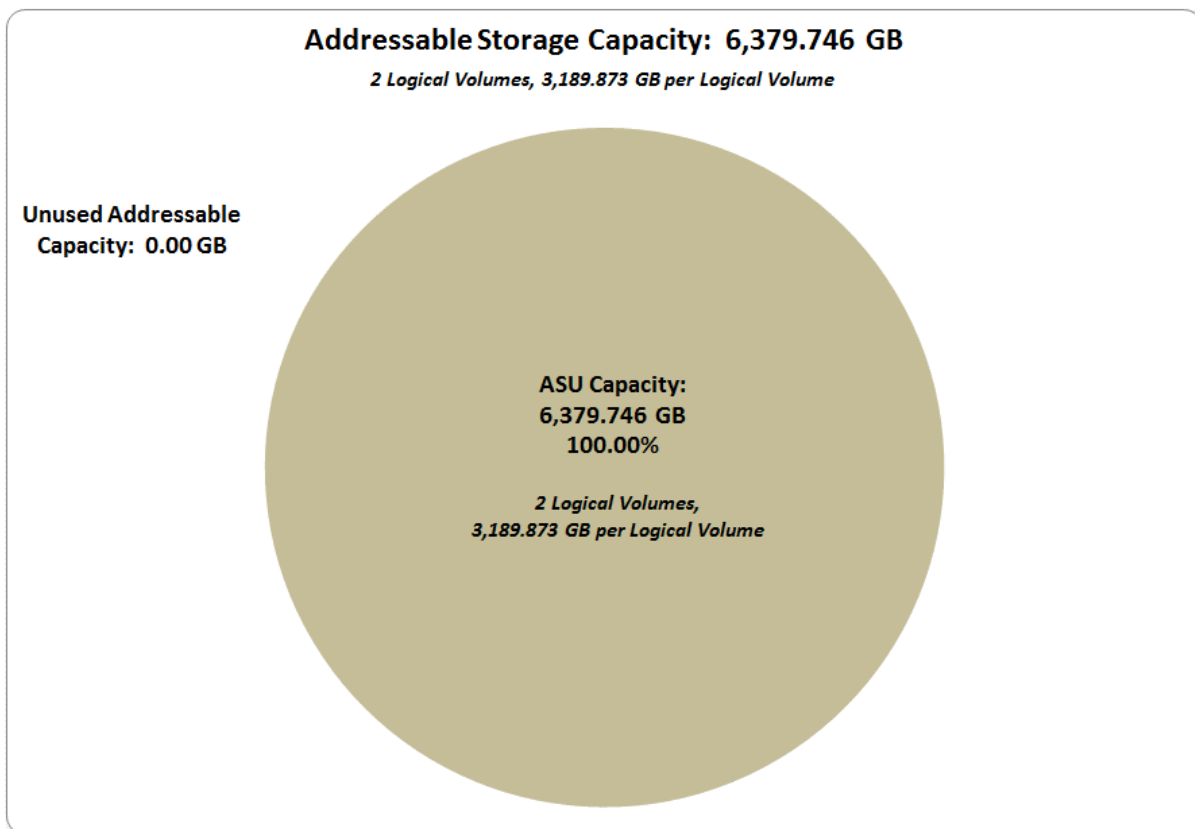
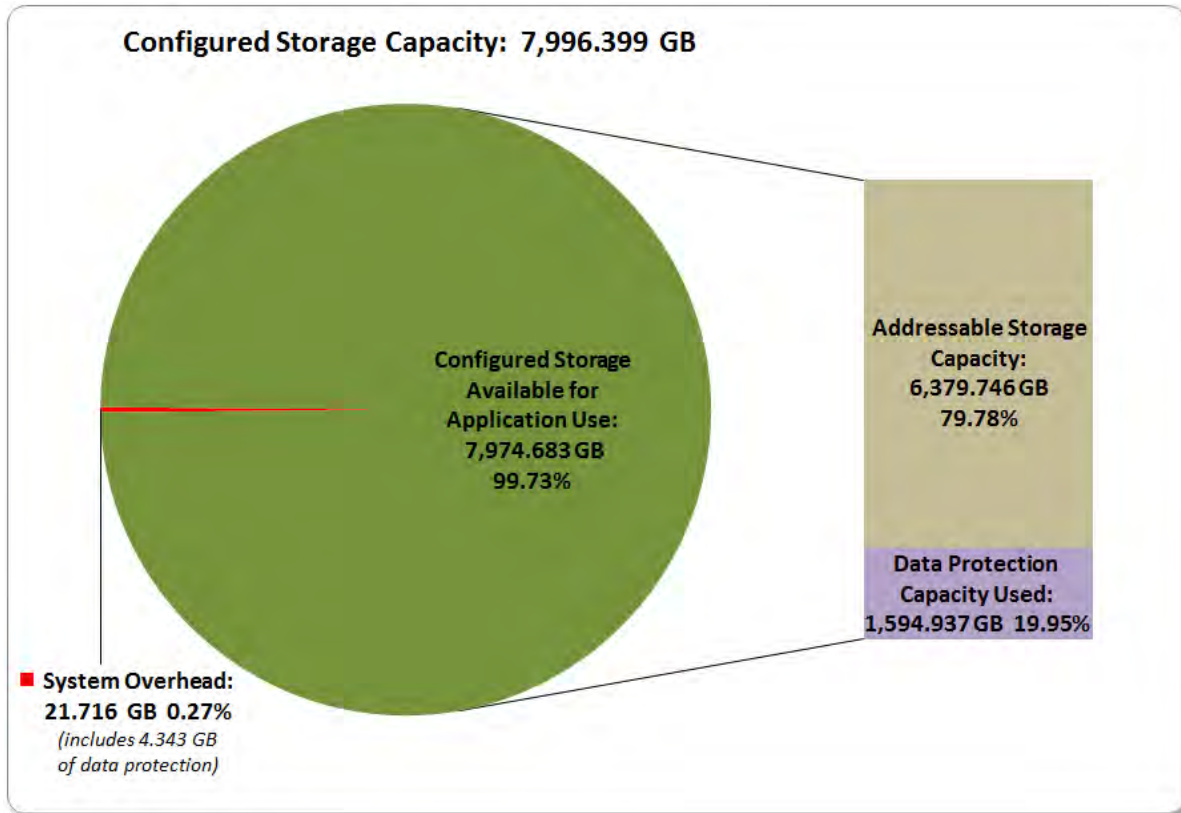
SPC-2 Storage Capacities		
Storage Hierarchy Component	Units	Capacity
Total ASU Capacity	Gigabytes (GB)	6,379.746
Addressable Storage Capacity	Gigabytes (GB)	6,379.746
Configured Storage Capacity	Gigabytes (GB)	7,996.399
Physical Storage Capacity	Gigabytes (GB)	8,001.769
Data Protection (<i>RAID-6</i>)	Gigabytes (GB)	1,599.280
Required Storage	Gigabytes (GB)	21.716
Global Storage Overhead	Gigabytes (GB)	5.371
Total Unused Storage	Gigabytes (GB)	0.000

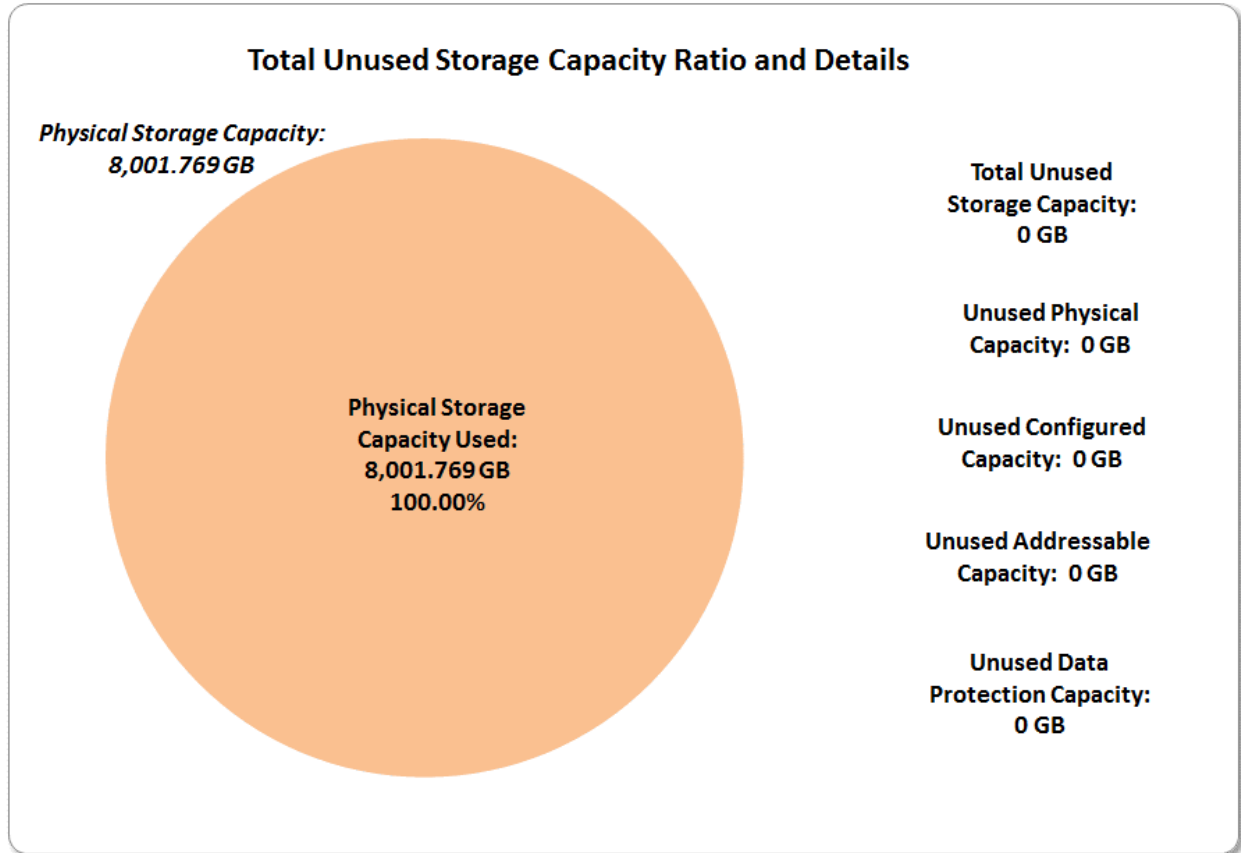
SPC-2 Storage Hierarchy Ratios

	Addressable Storage Capacity	Configured Storage Capacity	Physical Storage Capacity
Total ASU Capacity	100.00%	79.78%	79.73%
Data Protection (RAID-6)		20.00%	19.99%
Addressable Storage Capacity		79.78%	79.73%
Required Storage		0.27%	0.27%
Configured Storage Capacity			99.93%
Global Storage Overhead			0.07%
Unused Storage:			
Addressable	0.00%		
Configured		0.00%	
Physical			0.00%

SPC-2 Storage Capacity Charts







Storage Capacity Utilization

Clause 10.6.8.2

The FDR will include a table illustrating the storage capacity utilization values defined for Application Utilization (Clause 2.8.1), Protected Application Utilization (Clause 2.8.2), and Unused Storage Ratio (Clause 2.8.3).

Clause 2.8.1

Application Utilization is defined as Total ASU Capacity divided by Physical Storage Capacity.

Clause 2.8.2

Protected Application Utilization is defined as (Total ASU Capacity plus total Data Protection Capacity minus unused Data Protection Capacity) divided by Physical Storage Capacity.

Clause 2.8.3

Unused Storage Ratio is defined as Total Unused Capacity divided by Physical Storage Capacity and may not exceed 45%.

SPC-2 Storage Capacity Utilization	
Application Utilization	79.73%
Protected Application Utilization	99.72%
Unused Storage Ratio	0.00%

Logical Volume Capacity and ASU Mapping

Clause 10.6.8.3

A table illustrating the capacity of the Application Storage Unit (ASU) and the mapping of Logical Volumes to ASU will be provided in the FDR. Capacity must be stated in gigabytes (GB) as a value with a minimum of two digits to the right of the decimal point. Each Logical Volume will be sequenced in the table from top to bottom per its position in the contiguous address space of the ASU. Each Logical Volume entry will list its total capacity, the portion of that capacity used for the ASU, and any unused capacity.

Logical Volume (LV) Capacity and Mapping			
ASU (30,923.765 GB)			
	Total Capacity (GB)	Capacity Used (GB)	Capacity Unused (GB)
2 Logical Volumes	3,189.873 per LV	3,189.873 per LV	0.000 per LV

See the Storage Definition (sd) entries in [Appendix D: SPC-2 Workload Generator Storage Commands and Parameter](#) Files on page [75](#) for more detailed configuration information.

SPC-2 BENCHMARK EXECUTION RESULTS

This portion of the Full Disclosure Report documents the results of the various SPC-2 Tests, Test Phases, Test Run Sequences, and Test Runs. An [SPC-2 glossary](#) on page [59](#) contains definitions of terms specific to the SPC-2 Data Repository.

In each of the following sections of this document, the appropriate Full Disclosure Report requirement, from the SPC-2 benchmark specification, is stated in italics followed by the information to fulfill the stated requirement.

SPC-2 Tests, Test Phases, Test Run Sequences, and Test Runs

The SPC-2 benchmark consists of the following Tests, Test Phases, Test Run Sequences, and Test Runs:

- **Data Persistence Test**
 - Data Persistence Test Run 1
 - Data Persistence Test Run 2
- **Large File Processing Test**
 - WRITE ONLY Test Phase
 - Test Run Sequence 1
 - ✓ Test Run 1 – 1024 KiB Transfer – maximum number of Streams
 - ✓ Test Run 2 – 1024 KiB Transfer – 50% of Test Run 1’s Streams value
 - ✓ Test Run 3 – 1024 KiB Transfer – 25% of Test Run 1’s Streams value
 - ✓ Test Run 4 – 1024 KiB Transfer – 12.5% of Test Run 1’s Streams value
 - ✓ Test Run 5 – 1024 KiB Transfer – single (1) Stream
 - Test Run Sequence 2
 - ✓ Test Run 6 – 256 KiB Transfer – maximum number of Streams
 - ✓ Test Run 7 – 256 KiB Transfer – 50% of Test Run 6’s Streams value
 - ✓ Test Run 8 – 256 KiB Transfer – 25% of Test Run 6’s Streams value
 - ✓ Test Run 9 – 256 KiB Transfer – 12.5% of Test Run 6’s Streams value
 - ✓ Test Run 10 – 256 KiB Transfer – single (1) Stream
 - READ-WRITE Test Phase
 - Test Run Sequence 3
 - ✓ Test Run 11 – 1024 KiB Transfer – maximum number of Streams
 - ✓ Test Run 12 – 1024 KiB Transfer – 50% of Test Run 11’s Streams value
 - ✓ Test Run 13 – 1024 KiB Transfer – 25% of Test Run 11’s Streams value
 - ✓ Test Run 14 – 1024 KiB Transfer – 12.5% of Test Run 11’s Streams value
 - ✓ Test Run 15 – 1024 KiB Transfer – single (1) Stream
 - Test Run Sequence 4
 - ✓ Test Run 16 – 256 KiB Transfer – maximum number of Streams
 - ✓ Test Run 17 – 256 KiB Transfer – 50% of Test Run 16’s Streams value
 - ✓ Test Run 18 – 256 KiB Transfer – 25% of Test Run 16’s Streams value
 - ✓ Test Run 19 – 256 KiB Transfer – 12.5% of Test Run 16’s Streams value
 - ✓ Test Run 20 – 256 KiB Transfer – single (1) Stream
 - READ ONLY Test Phase
 - Test Run Sequence 5
 - ✓ Test Run 21 – 1024 KiB Transfer – maximum number of Streams

- ✓ Test Run 22 – 1024 KiB Transfer – 50% of Test Run 21’s Streams value
- ✓ Test Run 23 – 1024 KiB Transfer – 25% of Test Run 21’s Streams value
- ✓ Test Run 24 – 1024 KiB Transfer – 12.5% of Test Run 21’s Streams value
- ✓ Test Run 25 – 1024 KiB Transfer – single (1) Stream
- Test Run Sequence 6
 - ✓ Test Run 26 – 256 KiB Transfer – maximum number of Streams
 - ✓ Test Run 27 – 256 KiB Transfer – 50% of Test Run 26’s Streams value
 - ✓ Test Run 28 – 256 KiB Transfer – 25% of Test Run 26’s Streams value
 - ✓ Test Run 29 – 256 KiB Transfer – 12.5% of Test Run 26’s Streams value
 - ✓ Test Run 30 – 256 KiB Transfer – single (1) Stream
- **Large Database Query Test**
 - 1024 KiB TRANSFER SIZE Test Phase
 - Test Run Sequence 1
 - ✓ Test Run 1 – 4 I/O Requests Outstanding – maximum number of Streams
 - ✓ Test Run 2 – 4 I/O Requests Outstanding – 50% of Test Run 1’s Streams value
 - ✓ Test Run 3 – 4 I/O Requests Outstanding – 25% of Test Run 1’s Streams value
 - ✓ Test Run 4 – 4 I/O Requests Outstanding – 12.5% of Test Run 1’s Streams value
 - ✓ Test Run 5 – 4 I/O Requests Outstanding – single (1) Stream
 - Test Run Sequence 2
 - ✓ Test Run 6 – 1 I/O Request Outstanding – maximum number of Streams
 - ✓ Test Run 7 – 1 I/O Request Outstanding – 50% of Test Run 6’s Streams value
 - ✓ Test Run 8 – 1 I/O Request Outstanding – 25% of Test Run 6’s Streams value
 - ✓ Test Run 9 – 1 I/O Request Outstanding – 12.5% of Test Run 6’s Streams value
 - ✓ Test Run 10 – 1 I/O Request Outstanding – single (1) Stream
 - 64 KiB TRANSFER SIZE Test Phase
 - Test Run Sequence 3
 - ✓ Test Run 11 – 4 I/O Requests Outstanding – maximum number of Streams
 - ✓ Test Run 12 – 4 I/O Requests Outstanding – 50% of Test Run 11’s Streams value
 - ✓ Test Run 13 – 4 I/O Requests Outstanding – 25% of Test Run 11’s Streams value
 - ✓ Test Run 14 – 4 I/O Requests Outstanding – 12.5% of Test Run 11’s Streams value
 - ✓ Test Run 15 – 4 I/O Requests Outstanding – single (1) Stream
 - Test Run Sequence 4
 - ✓ Test Run 16 – 1 I/O Request Outstanding – maximum number of Streams
 - ✓ Test Run 17 – 1 I/O Request Outstanding – 50% of Test Run 16’s Streams value
 - ✓ Test Run 18 – 1 I/O Request Outstanding – 25% of Test Run 16’s Streams value
 - ✓ Test Run 19 – 1 I/O Request Outstanding – 12.5% of Test Run 16’s Streams value
 - ✓ Test Run 20 – 1 I/O Request Outstanding – single (1) Stream
- **Video on Demand Delivery Test**
 - Video on Demand Delivery Test Run

Each Test is an atomic unit that must be executed from start to finish before any other Test, Test Phase, or Test Run may be executed. The Tests may be executed in any sequence.

The results from each Test, Test Phase, and Test Run are listed below along with a more detailed explanation of each component.

Large File Processing Test

Clause 6.4.3.1

The Large File Processing Test consists of the I/O operations associated with the type of applications, in a wide range of fields, which require simple sequential processing of one or more large files. Specific examples of those types of applications include scientific computing and large-scale financial processing

Clause 6.4.3.2

The Large File Processing Test has three Test Phases, which shall be executed in the following uninterrupted sequence:

1. *WRITE ONLY*
2. *READ-WRITE*
3. *READ ONLY*

The BC shall not be restarted or manually disturbed, altered, or adjusted during the execution of the Large File Processing Test. If power is lost to the BC during this Test all results shall be rendered invalid and the Test re-run in its entirety.

Clause 10.6.9.1

The Full Disclosure Report will contain the following content for the Large File Processing Test:

1. *A listing of the SPC-2 Workload Generator commands and parameters used to execute each of the Test Runs in the Large File Processing Test.*
2. *The human readable SPC-2 Test Results File for each of the Test Runs in the Large File Processing Test.*
3. *The following three tables:*
 - *Average Data Rate: The average Data Rate, in MB per second for the Measurement Interval of each Test Run in the Large File Processing Test.*
 - *Average Data Rate per Stream: The average Data Rate per Stream, in MB per second, for the Measurement Interval of each Test Run in the Large File Processing Test.*
 - *Average Response Time: The average response time, in milliseconds (ms), for the Measurement Interval of each Test Run in the Large File Processing Test.*
4. *Average Data Rate, Average Data Rate per Stream and Average Response Time graphs as defined in Clauses 10.1.1, 10.1.2 and 10.1.3.*

SPC-2 Workload Generator Commands and Parameters

The SPC-2 Workload Generator commands and parameters for the Large File Processing Test Runs are documented in [Appendix E: SPC-2 Workload Generator Execution Commands and Parameters](#) on Page 80.

SPC-2 Test Results File

A link to the SPC-2 Test Results file generated from the Large File Processing Test Runs is listed below.

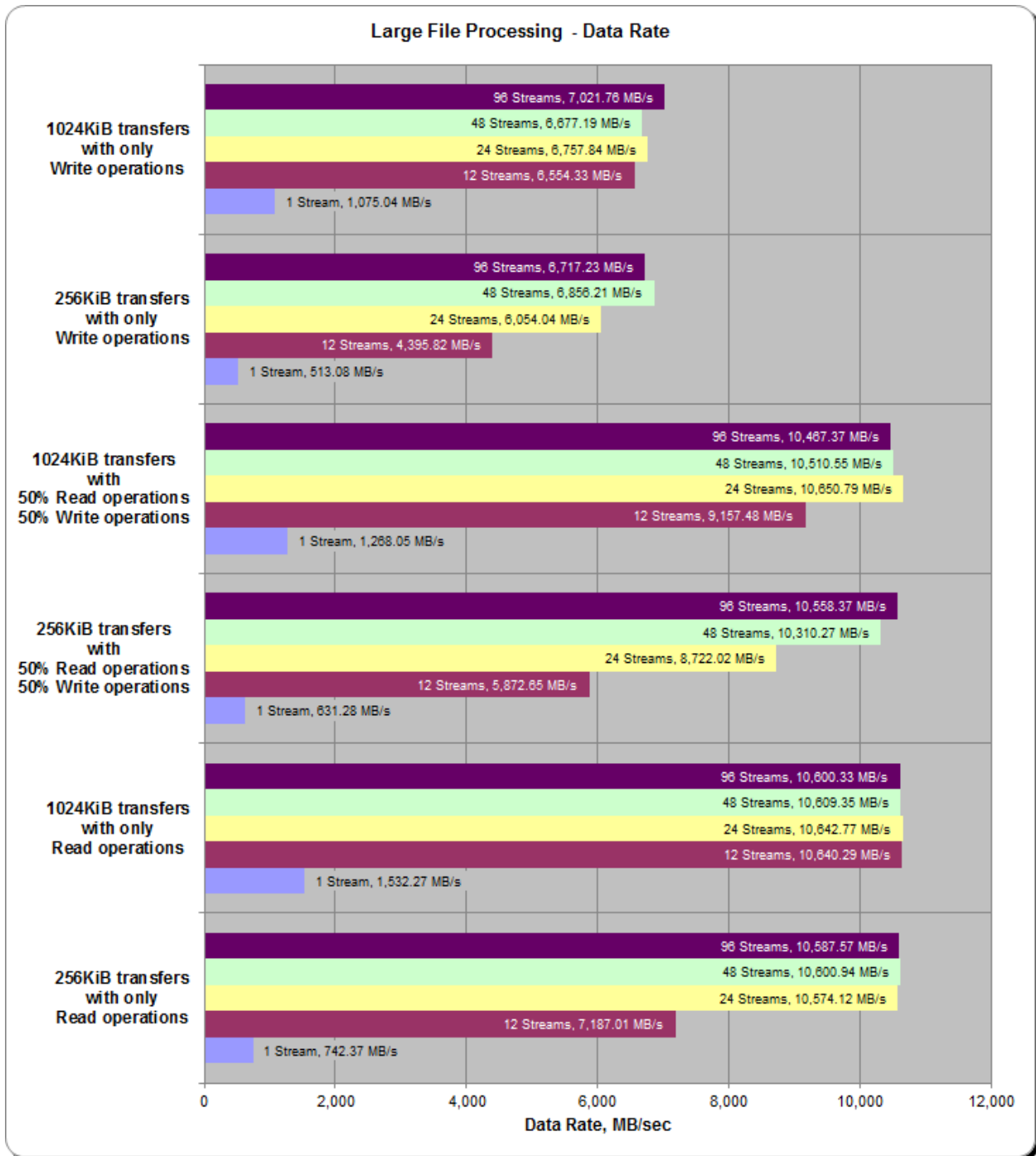
[SPC-2 Large File Processing Test Results File](#)

SPC-2 Large File Processing Average Data Rates (MB/s)

The average Data Rate (MB/s) for each Test Run in the three Test Phases of the SPC-2 Large File Processing Test is listed in the table below as well as illustrated in the following graph.

Test Run Sequence	1 Stream	12 Streams	24 Streams	48 Streams	96 Streams
Write 1024KiB	1,075.04	6,554.33	6,757.84	6,677.19	7,021.76
Write 256KiB	513.08	4,395.82	6,054.04	6,856.21	6,717.23
Read/Write 1024KiB	1,268.05	9,157.48	10,650.79	10,510.55	10,467.37
Read/Write 256KiB	631.28	5,872.65	8,722.02	10,310.27	10,558.37
Read 1024KiB	1,532.27	10,640.29	10,642.77	10,609.35	10,600.33
Read 256KiB	742.37	7,187.01	10,574.12	10,600.94	10,587.57

SPC-2 Large File Processing Average Data Rates Graph

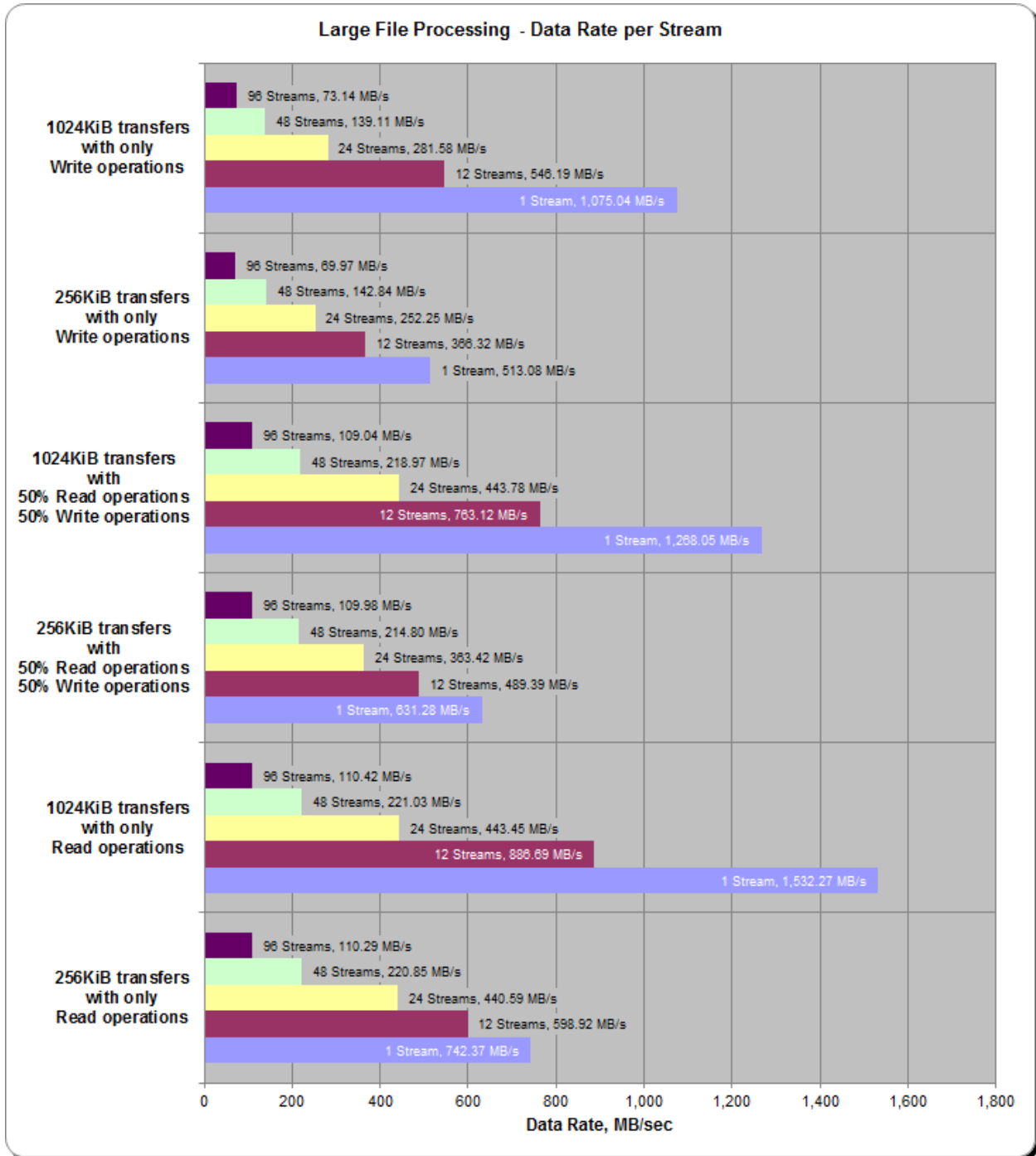


SPC-2 Large File Processing Average Data Rate per Stream

The average Data Rate per Stream for each Test Run in the three Test Phases of the SPC-2 Large File Processing Test is listed in the table below as well as illustrated in the following graph.

Test Run Sequence	1 Stream	12 Streams	24 Streams	48 Streams	96 Streams
Write 1024KiB	1,075.04	546.19	281.58	139.11	73.14
Write 256KiB	513.08	366.32	252.25	142.84	69.97
Read/Write 1024KiB	1,268.05	763.12	443.78	218.97	109.04
Read/Write 256KiB	631.28	489.39	363.42	214.80	109.98
Read 1024KiB	1,532.27	886.69	443.45	221.03	110.42
Read 256KiB	742.37	598.92	440.59	220.85	110.29

SPC-2 Large File Processing Average Data Rate per Stream Graph

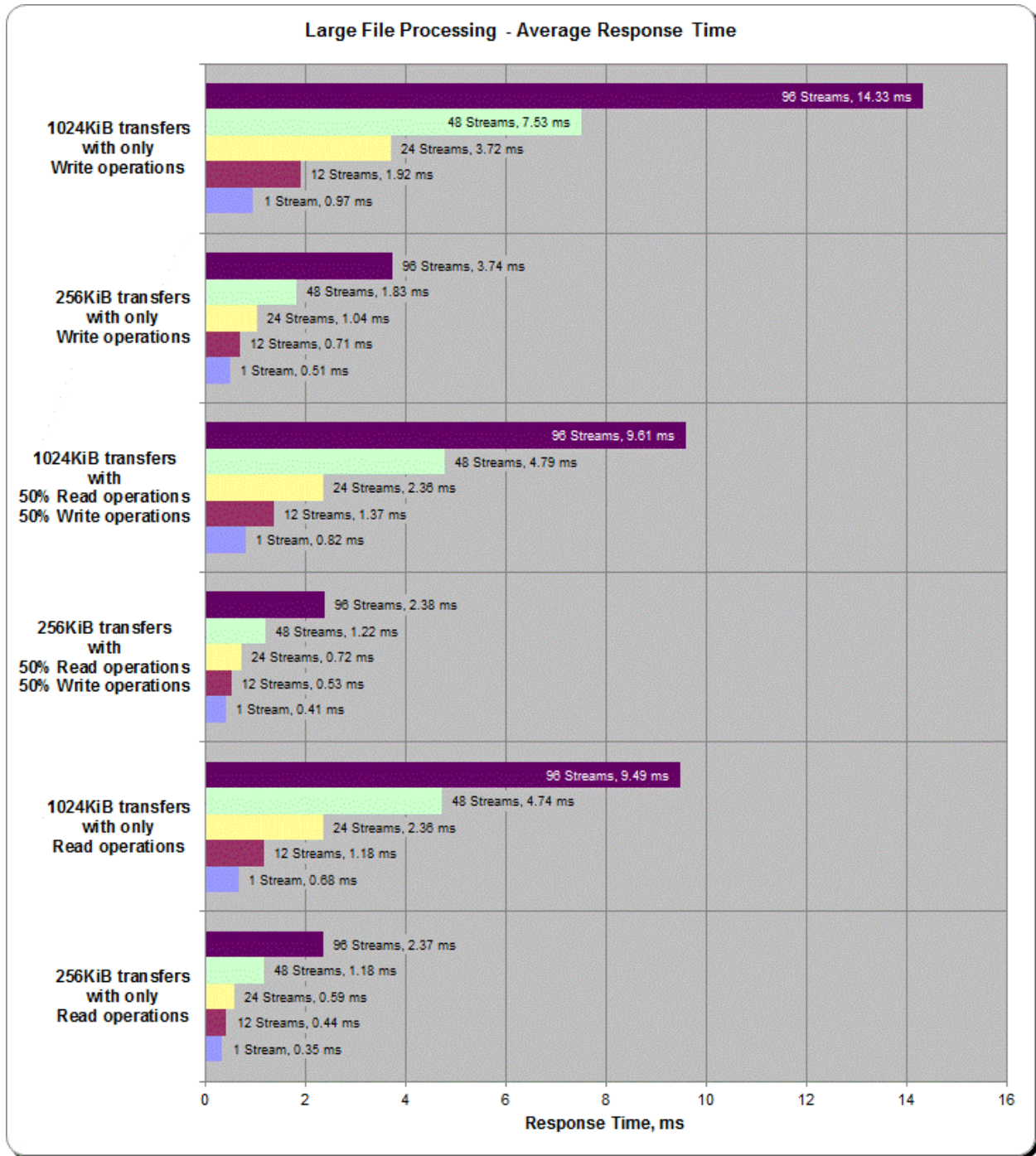


SPC-2 Large File Processing Average Response Time

The average Response Time, milliseconds (ms), for each Test Run in the three Test Phases of the SPC-2 Large File Processing Test is listed in the table below as well as illustrated in the following graph.

Test Run Sequence	1 Stream	12 Streams	24 Streams	48 Streams	96 Streams
Write 1024KiB	0.97	1.92	3.72	7.53	14.33
Write 256KiB	0.51	0.71	1.04	1.83	3.74
Read/Write 1024KiB	0.82	1.37	2.36	4.79	9.61
Read/Write 256KiB	0.41	0.53	0.72	1.22	2.38
Read 1024KiB	0.68	1.18	2.36	4.74	9.49
Read 256KiB	0.35	0.44	0.59	1.18	2.37

SPC-2 Large File Processing Average Response Time Graph



Large File Processing Test – WRITE ONLY Test Phase

Clause 10.6.9.1.1

1. A table that will contain the following information for each "WRITE ONLY, 1024 KiB Transfer Size" Test Run:
 - The number of Streams specified.
 - The Average Data Rate, Average Data Rate per Stream, and Average Response Time reported at five second intervals.
2. Average Data Rate by Intervals, Average Data Rate per Stream by Intervals, and Average Response Time by Intervals graphs for the "WRITE ONLY, 1024 KiB Transfer Size" Test Runs as specified in Clauses 10.1.4 – 10.1.6.
3. A table that will contain the following information for each "WRITE ONLY, 256 KiB Transfer Size" Test Run:
 - The number of Streams specified.
 - The Average Data Rate, Average Data Rate per Stream, and Average Response Time reported at five second intervals.
4. Average Data Rate by Intervals, Average Data Rate per Stream by Intervals, and Average Response Time by Intervals graphs for the "WRITE ONLY, 256 KiB Transfer Size" Test Runs as specified in Clauses 10.1.4 – 10.1.6.

A hyperlink for each of the above tables and graphs may appear in the FDR to provide access to the table or graph.

A hyperlink to a table with the SPC-2 "Large File Processing/WRITE ONLY/1024 KiB Transfer Size" Test Run data appears on the next page. That entry is followed by hyperlinks to graphs illustrating the average Data Rate, average Data Rate per Stream, and average Response Time produced by the same Test Runs. The table and graphs present the data at five-second intervals.

Immediately following the above SPC-2 "Large File Processing/WRITE ONLY/1024 KiB Transfer Size" entries will be hyperlinks for SPC-2 "Large File Processing/WRITE ONLY/256 KiB Transfer Size" table and graphs. The table contains the Test Run data and the graphs illustrate the average Data Rate, average Data Rate per Stream, and average Response Time produced by the Test Runs.

SPC-2 “Large File Processing/WRITE ONLY/1024 KiB Transfer Size” Test Run Data

[SPC-2 “Large File Processing/Write Only/1024 KiB Transfer Size” Test Run Data Tables: Ramp-Up, Measurement Interval, Run-Out, and Ramp-Down Periods](#)
(3 pages)

SPC-2 “Large File Processing/WRITE ONLY/1024 KiB Transfer Size” Graphs

- Average Data Rate – Complete Test Run
- Average Data Rate – Measurement Interval (MI) Only
- Average Data Rate per Stream Average Response Time

[SPC-2 “Large File Processing/Write Only/1024 KiB Transfer Size” graphs](#)
(four pages, 1 graph per page)

SPC-2 “Large File Processing/WRITE ONLY/256 KiB Transfer Size” Test Run Data

[SPC-2 “Large File Processing/Write Only/256 KiB Transfer Size” Test Run Data Tables: Ramp-Up, Measurement Interval, Run-Out, and Ramp-Down Periods](#)
(3 pages)

SPC-2 “Large File Processing/WRITE ONLY/256 KiB Transfer Size” Graphs

- Average Data Rate – Complete Test Run
- Average Data Rate – Measurement Interval (MI) Only
- Average Data Rate per Stream
- Average Response Time

[SPC-2 “Large File Processing/Write Only/256 KiB Transfer Size” graphs](#)
(four pages, 1 graph per page)

Large File Processing Test – READ-WRITE Test Phase

Clause 10.6.9.1.2

1. *A table that will contain the following information for each "READ-WRITE, 1024 KiB Transfer Size" Test Run:*
 - *The number of Streams specified.*
 - *The Average Data Rate, Average Data Rate per Stream, and Average Response Time reported at five second intervals.*
2. *Average Data Rate by Intervals, Average Data Rate per Stream by Intervals, and Average Response Time by Intervals graphs for the "READ-WRITE, 1024 KiB Transfer Size" Test Runs as specified in Clauses 10.1.4 – 10.1.6.*
3. *A table that will contain the following information for each "READ-WRITE, 256 KiB Transfer Size" Test Run:*
 - *The number of Streams specified.*
 - *The Average Data Rate, Average Data Rate per Stream, and Average Response Time reported at five second intervals.*
4. *Average Data Rate by Intervals, Average Data Rate per Stream by Intervals, and Average Response Time by Intervals graphs for the "READ-WRITE, 256 KiB Transfer Size" Test Runs as specified in Clauses 10.1.4 – 10.1.6.*

A hyperlink for each of the above tables and graphs may appear in the FDR to provide access to the table or graph.

A hyperlink to a table with the SPC-2 "Large File Processing/READ-WRITE/1024 KiB Transfer Size" Test Run data appears on the next page. That entry is followed by hyperlinks to graphs illustrating the average Data Rate, average Data Rate per Stream, and average Response Time produced by the same Test Runs. The table and graphs present the data at five-second intervals.

Immediately following the above SPC-2 "Large File Processing/READ-WRITE/1024 KiB Transfer Size" entries will be hyperlinks for SPC-2 "Large File Processing/READ-WRITE/256 KiB Transfer Size" table and graphs. The table contains the Test Run data and the graphs illustrate the average Data Rate, average Data Rate per Stream, and average Response Time produced by the Test Runs.

SPC-2 “Large File Processing/READ-WRITE/1024 KiB Transfer Size” Test Run Data

[SPC-2 “Large File Processing/Read-Write/1024 KiB Transfer Size” Test Run Data Tables: Ramp-Up, Measurement Interval, Run-Out, and Ramp-Down Periods](#)
(3 pages)

SPC-2 “Large File Processing/READ-WRITE/1024 KiB Transfer Size” Graphs

- Average Data Rate – Complete Test Run
- Average Data Rate – Measurement Interval (MI) Only
- Average Data Rate per Stream
- Average Response Time

[SPC-2 “Large File Processing/Read-Write/1024 KiB Transfer Size” graphs](#)
(four pages, 1 graph per page)

SPC-2 “Large File Processing/READ-WRITE/256 KiB Transfer Size” Test Run Data

[SPC-2 “Large File Processing/Read-Write/256 KiB Transfer Size” Test Run Data Tables: Ramp-Up, Measurement Interval, Run-Out, and Ramp-Down Periods](#)
(3 pages)

SPC-2 “Large File Processing/READ-WRITE/256 KiB Transfer Size” Graphs

- Average Data Rate – Complete Test Run
- Average Data Rate – Measurement Interval (MI) Only
- Average Data Rate per Stream
- Average Response Time

[SPC-2 “Large File Processing/Read-Write/256 KiB Transfer Size” graphs](#)
(four pages, 1 graph per page)

Large File Processing Test – READ ONLY Test Phase

Clause 10.6.9.1.3

- *A table that will contain the following information for each "READ ONLY, 1024 KiB Transfer Size" Test Run:*
 - *The number of Streams specified.*
 - *The Average Data Rate, Average Data Rate per Stream, and Average Response Time reported at five second intervals.*
- *Average Data Rate by Intervals, Average Data Rate per Stream by Intervals, and Average Response Time by Intervals graphs for the "READ ONLY, 1024 KiB Transfer Size" Test Runs as specified in Clauses 10.1.4 – 10.1.6.*
- *A table that will contain the following information for each "READ ONLY, 256 KiB Transfer Size" Test Run:*
 - *The number of Streams specified.*
 - *The Average Data Rate, Average Data Rate per Stream, and Average Response Time reported at five second intervals.*
- *Average Data Rate by Intervals, Average Data Rate per Stream by Intervals, and Average Response Time by Intervals graphs for the "READ ONLY, 256 KiB Transfer Size" Test Runs as specified in Clauses 10.1.4 – 10.1.6.*

A hyperlink for each of the above tables and graphs may appear in the FDR to provide access to the table or graph.

A hyperlink to a table with the SPC-2 "Large File Processing/READ ONLY/1024 KiB Transfer Size" Test Run data appears on the next page. That entry is followed by hyperlinks to graphs illustrating the average Data Rate, average Data Rate per Stream, and average Response Time produced by the same Test Runs. The table and graphs present the data at five-second intervals.

Immediately following the above SPC-2 "Large File Processing/READ ONLY/1024 KiB Transfer Size" entries will be hyperlinks for SPC-2 "Large File Processing/READ ONLY/256 KiB Transfer Size" table and graphs. The table contains the Test Run data and the graphs illustrate the average Data Rate, average Data Rate per Stream, and average Response Time produced by the Test Runs.

SPC-2 “Large File Processing/READ ONLY/1024 KiB Transfer Size” Test Run Data

[SPC-2 “Large File Processing/Read Only/1024 KiB Transfer Size” Test Run Data Tables: Ramp-Up, Measurement Interval, Run-Out, and Ramp-Down Periods](#)
(3 pages)

SPC-2 “Large File Processing/READ ONLY/1024 KiB Transfer Size” Graphs

- Average Data Rate – Complete Test Run
- Average Data Rate – Measurement Interval (MI) Only
- Average Data Rate per Stream
- Average Response Time

[SPC-2 “Large File Processing/Read Only/1024 KiB Transfer Size” graphs](#)
(four pages, 1 graph per page)

SPC-2 “Large File Processing/READ ONLY/256 KiB Transfer Size” Test Run Data

[SPC-2 “Large File Processing/Read Only/256 KiB Transfer Size” Test Run Data Tables: Ramp-Up, Measurement Interval, Run-Out, and Ramp-Down Periods](#)
(3 pages)

SPC-2 “Large File Processing/READ ONLY/256 KiB Transfer Size” Graphs

- Average Data Rate – Complete Test Run
- Average Data Rate – Measurement Interval (MI) Only
- Average Data Rate per Stream
- Average Response Time

[SPC-2 “Large File Processing/Read Only/256 KiB Transfer Size” graphs](#)
(four pages, 1 graph per page)

Large Database Query Test

Clause 6.4.4.1

The Large Database Query Test is comprised of a set of I/O operations representative of scans or joins of large relational tables such as those performed for data mining or business intelligence.

Clause 6.4.4.2

The Large Database Query Test has two Test Phases, which shall be executed in the following uninterrupted sequence:

1. *1024 KiB TRANSFER SIZE*
2. *64 KiB TRANSFER SIZE*

The BC shall not be restarted or manually disturbed, altered, or adjusted during the execution of the Large File Processing Test. If power is lost to the BC during this Test all results shall be rendered invalid and the Test re-run in its entirety.

Clause 10.6.9.2

The Full Disclosure Report will contain the following content for the Large Database Query Test:

1. *A listing of the SPC-2 Workload Generator commands and parameters used to execute each of the Test Runs in the Large Database Query Test.*
2. *The human readable SPC-2 Test Results File for each of the Test Runs in the Large Database Query Test.*
3. *A table that contains the following information for each Test Run in the two Test Phases of the Large Database Query Test:*
 - *Average Data Rate: The average Data Rate, in MB per second for the Measurement Interval of each Test Run in the Large Database Query Test.*
 - *Average Data Rate per Stream: The average Data Rate per Stream, in MB per second, for the Measurement Interval of each Test Run in the Large Database Query Test.*
 - *Average Response Time: The average response time, in milliseconds (ms), for the Measurement Interval of each Test Run in the Large Database Query Test.*
4. *Average Data Rate, Average Data Rate per Stream and Average Response time graphs as defined in Clauses 10.1.1, 10.1.2 and 10.1.3.*

SPC-2 Workload Generator Commands and Parameters

The SPC-2 Workload Generator commands and parameters for the Large Database Query Test Runs are documented in [Appendix E: SPC-2 Workload Generator Execution Commands and Parameters](#) on Page [80](#).

SPC-2 Test Results File

A link to the SPC-2 Test Results file generated from the Large Database Query Test Runs is listed below.

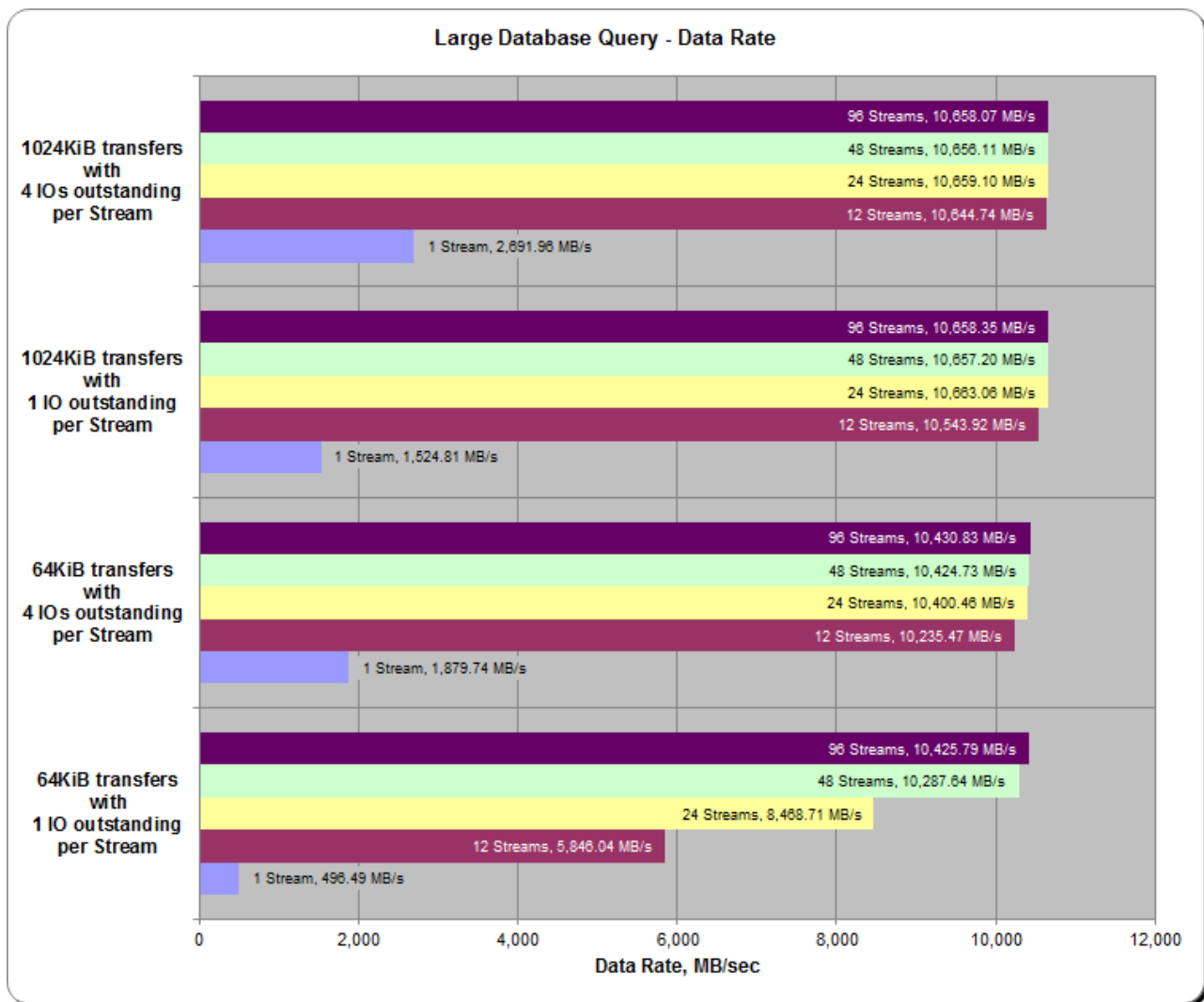
[SPC-2 Large Database Query Test Results File](#)

SPC-2 Large Database Query Average Data Rates (MB/s)

The average Data Rate (MB/s) for each Test Run in the two Test Phases of the SPC-2 Large Database Query Test is listed in the table below as well as illustrated in the following graph.

Test Run Sequence	1 Stream	12 Streams	24 Streams	48 Streams	96 Streams
1024KiB w/ 4 IOs/Stream	2,691.96	10,644.74	10,659.10	10,656.11	10,658.07
1024KiB w/ 1 IO/Stream	1,524.81	10,543.92	10,663.06	10,657.20	10,658.35
64KiB w/ 4 IOs/Stream	1,879.74	10,235.47	10,400.46	10,424.73	10,430.83
64KiB w/ 1 IO/Stream	496.49	5,846.04	8,468.71	10,287.64	10,425.79

SPC-2 Large Database Query Average Data Rates Graph

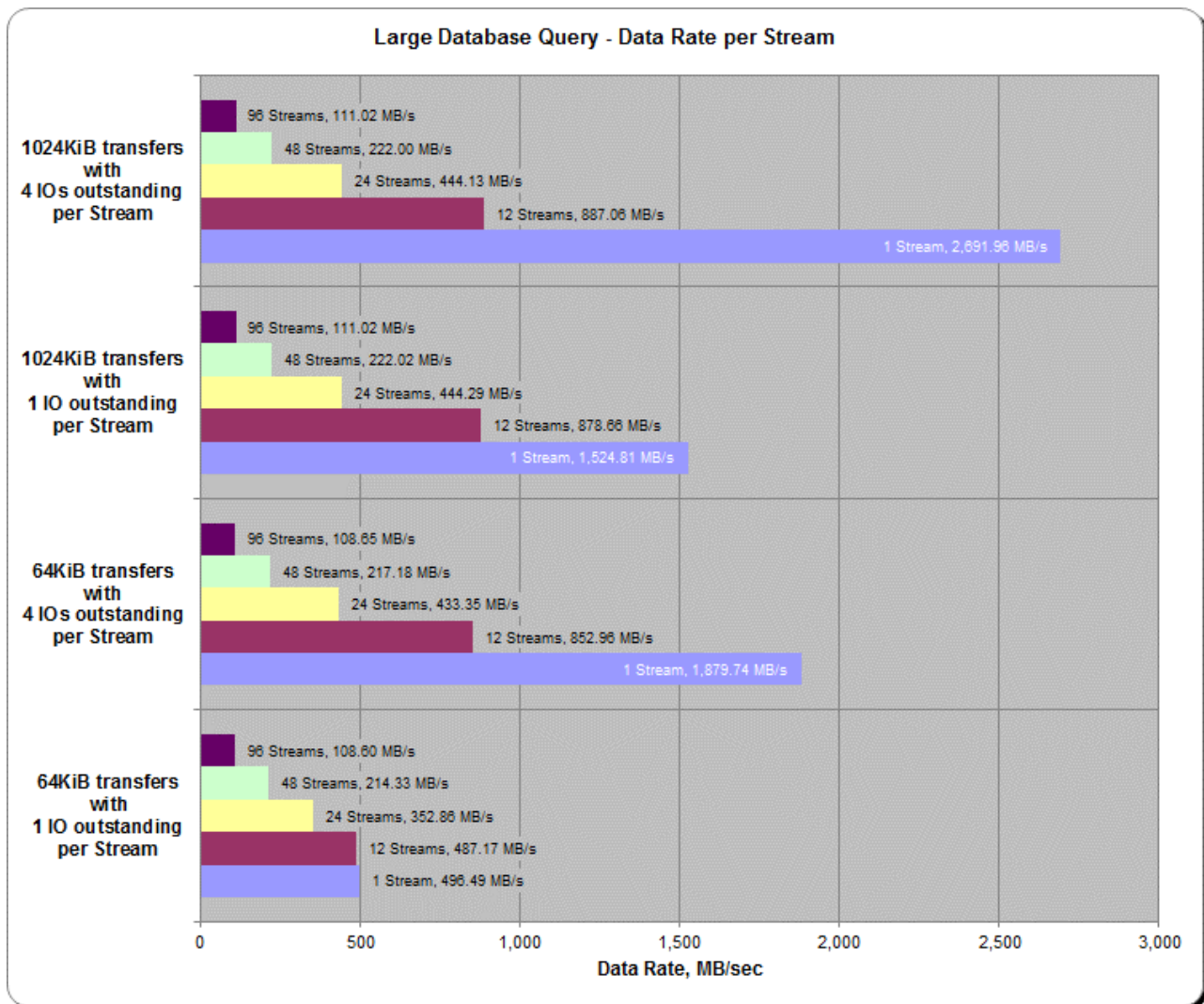


SPC-2 Large Database Query Average Data Rate per Stream

The average Data Rate per Stream for each Test Run in the two Test Phases of the SPC-2 Large Database Query Test is listed in the table below as well as illustrated in the following graph.

Test Run Sequence	1 Stream	12 Streams	24 Streams	48 Streams	96 Streams
1024KiB w/ 4 IOs/Stream	2,691.96	887.06	444.13	222.00	111.02
1024KiB w/ 1 IO/Stream	1,524.81	878.66	444.29	222.02	111.02
64KiB w/ 4 IOs/Stream	1,879.74	852.96	433.35	217.18	108.65
64KiB w/ 1 IO/Stream	496.49	487.17	352.86	214.33	108.60

SPC-2 Large Database Query Average Data Rate per Stream Graph

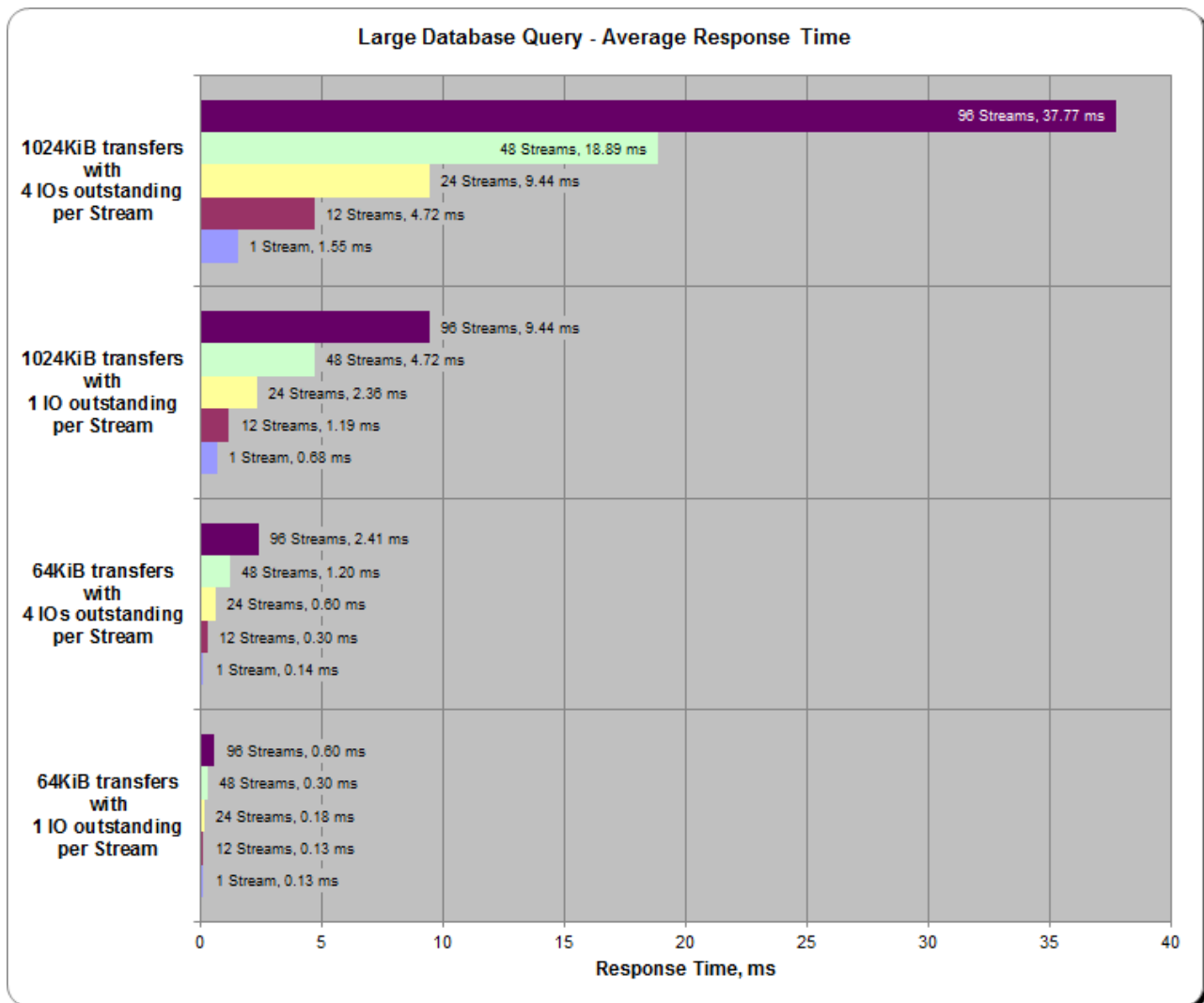


SPC-2 Large Database Query Average Response Time

The average Response Time, in milliseconds, for each Test Run in the two Test Phases of the SPC-2 Large Database Query Test is listed in the table below as well as illustrated in the following graph.

Test Run Sequence	1 Stream	12 Streams	24 Streams	48 Streams	96 Streams
1024KiB w/ 4 IOs/Stream	1.55	4.72	9.44	18.89	37.77
1024KiB w/ 1 IO/Stream	0.68	1.19	2.36	4.72	9.44
64KiB w/ 4 IOs/Stream	0.14	0.30	0.60	1.20	2.41
64KiB w/ 1 IO/Stream	0.13	0.13	0.18	0.30	0.60

SPC-2 Large Database Query Average Response Time Graph



Large Database Query Test – 1024 KiB TRANSFER SIZE Test Phase

Clause 10.6.9.2.1

1. A table that will contain the following information for each "1024 KiB Transfer Size, 4 Outstanding I/Os" Test Run:
 - The number of Streams specified.
 - The Average Data Rate, Average Data Rate per Stream, and Average Response Time reported at five second intervals.
2. Average Data Rate by Intervals, Average Data Rate per Stream by Intervals, and Average Response Time by Intervals graphs for the "1024 KiB Transfer Size, 4 Outstanding I/Os" Test Runs as specified in Clauses 10.1.4 – 10.1.6.
3. A table that will contain the following information for each "1024 KiB Transfer Size, 1 Outstanding I/O" Test Run:
 - The number of Streams specified.
 - The Average Data Rate, Average Data Rate per Stream, and Average Response Time reported at five second intervals.
4. Average Data Rate by Intervals, Average Data Rate per Stream by Intervals, and Average Response Time by Intervals graphs for the "1024 KiB Transfer Size, 1 Outstanding I/O" Test Runs as specified in Clauses 10.1.4 – 10.1.6.

A hyperlink for each of the above tables and graphs may appear in the FDR to provide access to the table or graph.

A hyperlink to a table with the SPC-2 "Large Database Query/1024 KIB TRANSFER SIZE/4 Outstanding I/Os" Test Run data appears on the next page. That entry is followed by hyperlinks to graphs illustrating the average Data Rate, average Data Rate per Stream, and average Response Time produced by the same Test Runs. The table and graphs present the data at five-second intervals.

Immediately following the above SPC-2 "Large Database Query/1024 KIB TRANSFER SIZE/4 Outstanding I/Os" entries will be hyperlinks for SPC-2 "Large Database Query/1024 KIB TRANSFER SIZE/1 Outstanding I/O" table and graphs. The table contains the Test Run data and the graphs illustrate the average Data Rate, average Data Rate per Stream, and average Response Time produced by the Test Runs.

SPC-2 “Large Database Query/1024 KiB TRANSFER SIZE/4 Outstanding I/Os” Test Run Data

[SPC-2 “Large Database Query/1024 KiB Transfer Size/4 Outstanding I/Os” Test Run Data Tables: Ramp-Up, Measurement Interval, Run-Out, and Ramp-Down Periods](#)

(3 pages)

SPC-2 “Large Database Query/1024 KiB TRANSFER SIZE/4 Outstanding I/Os” Graphs

- Average Data Rate – Complete Test Run
- Average Data Rate – Measurement Interval (MI) Only
- Average Data Rate per Stream
- Average Response Time

[SPC-2 “Large Database Query/1024 KiB Transfer Size/4 Outstanding I/Os” graphs](#)

(four pages, 1 graph per page)

SPC-2 “Large Database Query/1024 KiB TRANSFER SIZE/1 Outstanding I/O” Test Run Data

[SPC-2 “Large Database Query/1024 KiB Transfer Size/1 Outstanding I/O” Test Run Data Tables: Ramp-Up, Measurement Interval, Run-Out, and Ramp-Down Periods](#)

(3 pages)

SPC-2 “Large Database Query/1024 KiB TRANSFER SIZE/1 Outstanding I/O” Graphs

- Average Data Rate – Complete Test Run
- Average Data Rate – Measurement Interval (MI) Only
- Average Data Rate per Stream
- Average Response Time

[SPC-2 “Large Database Query/1024 KiB Transfer Size/1 Outstanding I/O” graphs](#)

(four pages, 1 graph per page)

Large Database Query Test – 64 KiB TRANSFER SIZE Test Phase

Clause 10.6.9.2.2

1. A table that will contain the following information for each "64 KiB Transfer Size, 4 Outstanding I/Os" Test Run:
 - The number of Streams specified.
 - The Average Data Rate, Average Data Rate per Stream, and Average Response Time reported at five second intervals.
2. Average Data Rate by Intervals, Average Data Rate per Stream by Intervals, and Average Response Time by Intervals graphs for the "64 KiB Transfer Size, 4 Outstanding I/Os" Test Runs as specified in Clauses 10.1.4 – 10.1.6.
3. A table that will contain the following information for each "64 KiB Transfer Size, 1 Outstanding I/O" Test Run:
 - The number of Streams specified.
 - The Average Data Rate, Average Data Rate per Stream, and Average Response Time reported at five second intervals.
4. Average Data Rate by Intervals, Average Data Rate per Stream by Intervals, and Average Response Time by Intervals graphs for the "64 KiB Transfer Size, 1 Outstanding I/O" Test Runs as specified in Clauses 10.1.4 – 10.1.6.

A hyperlink for each of the above tables and graphs may appear in the FDR to provide access to the table or graph.

A hyperlink to a table with the SPC-2 "Large Database Query/64 KiB TRANSFER SIZE/4 Outstanding I/Os" Test Run data appears on the next page. That entry is followed by hyperlinks to graphs illustrating the average Data Rate, average Data Rate per Stream, and average Response Time produced by the same Test Runs. The table and graphs present the data at five-second intervals.

Immediately following the above SPC-2 "Large Database Query/64 KiB TRANSFER SIZE/4 Outstanding I/Os" entries will be hyperlinks for SPC-2 "Large Database Query/64 KiB TRANSFER SIZE/1 Outstanding I/O" table and graphs. The table contains the Test Run data and the graphs illustrate the average Data Rate, average Data Rate per Stream, and average Response Time produced by the Test Runs.

SPC-2 “Large Database Query/64 KiB TRANSFER SIZE/4 Outstanding I/Os” Test Run Data

[SPC-2 “Large Database Query/64 KiB Transfer Size/4 Outstanding I/Os” Test Run Data Tables: Ramp-Up, Measurement Interval, Run-Out, and Ramp-Down Periods](#)

(3 pages)

SPC-2 “Large Database Query/64 KiB TRANSFER SIZE/4 Outstanding I/Os” Graphs

- Average Data Rate – Complete Test Run
- Average Data Rate – Measurement Interval (MI) Only
- Average Data Rate per Stream
- Average Response Time

[SPC-2 “Large Database Query/64 KiB Transfer Size/4 Outstanding I/Os” graphs](#)

(four pages, 1 graph per page)

SPC-2 “Large Database Query/64 KiB TRANSFER SIZE/1 Outstanding I/O” Test Run Data

[SPC-2 “Large Database Query/64 KiB Transfer Size/1 Outstanding I/O” Test Run Data Tables: Ramp-Up, Measurement Interval, Run-Out, and Ramp-Down Periods](#)

(3 pages)

SPC-2 “Large Database Query/64 KiB TRANSFER SIZE/1 Outstanding I/O” Graphs

- Average Data Rate – Complete Test Run
- Average Data Rate – Measurement Interval (MI) Only
- Average Data Rate per Stream
- Average Response Time

[SPC-2 “Large Database Query/64 KiB Transfer Size/1 Outstanding I/O” graphs](#)

(four pages, 1 graph per page)

Video on Demand Delivery Test

Clause 6.4.5.1

The Video on Demand Delivery Test represents the I/O operations required to enable individualized video entertainment for a community of subscribers, which draw from a digital film library.

Clause 6.4.5.2

The Video on Demand Delivery Test consists of one (1) Test Run.

The BC shall not be restarted or manually disturbed, altered, or adjusted during the execution of the Video on Demand Delivery Test. If power is lost to the BC during this Test all results shall be rendered invalid and the Test re-run in its entirety.

Clause 10.6.9.3

The Full Disclosure Report will contain the following content for the Video on Demand Delivery Test:

- 1. A listing of the SPC-2 Workload Generator commands and parameters used to execute the Test Run in the Video on Demand Delivery Test.*
- 2. The human readable SPC-2 Test Results File for the Test Run in the Video on Demand Delivery Test.*
- 3. A table that contains the following information for the Test Run in the Video on Demand Delivery Test:*
 - The number Streams specified.*
 - The Ramp-Up duration in seconds.*
 - The Measurement Interval duration in seconds.*
 - The average data rate, in MB per second, for the Measurement Interval.*
 - The average data rate, in MB per second, per Stream for the Measurement Interval.*
- 4. A table that contains the following information for the single Video on Demand Delivery Test Run:*
 - The number Streams specified.*
 - The average data rate, average data rate per stream, average Response Time, and Maximum Response Time reported at 60 second intervals.*
- 5. Average Data Rate by Intervals, Average Data Rate per Stream by Intervals, and Average Response Time by Intervals graphs for the single Video on Demand Delivery Test Run as specified in Clause 10.1.8.*
- 6. A Maximum Response Time (intervals) graph as specified in Clause 10.1.8.*

SPC-2 Workload Generator Commands and Parameters

The SPC-2 Workload Generator commands and parameters for the Video on Demand Delivery Test Run are documented in [Appendix E: SPC-2 Workload Generator Execution Commands and Parameters](#) on Page 80..

SPC-2 Test Results File

A link to the SPC-2 Test Results file generated from the Video on Demand Delivery Test Run is listed below.

[SPC-2 Video on Demand Delivery Test Results File](#)

SPC-2 Video on Demand Delivery Test Run Data

The number of Streams specified, Ramp-Up duration in seconds, Measurement Interval duration in seconds, average Data Rate for the Measurement Interval, and average Data Rate per Stream for the Measurement Interval are listed in the following table.

SPC-2-VOD	TR1
Number of Streams	13,000
Ramp-up Time, sec	1,200
Measurement Interval, sec	7,200
Average Data Rate, MB/sec	10,223.60
Per Stream Data Rate, MB/sec	0.79
Average Response Time, ms	1.97
Average Max Response Time, ms	10.71

Video on Demand Delivery Test – TEST RUN DATA BY INTERVAL

The SPC-2 Video on Demand Delivery Test Run data is contained in the table that due to the duration of the Test Run and resultant size of the data table, the data table is not embedded in this document. The data table may be viewed and/or downloaded from the following URL.

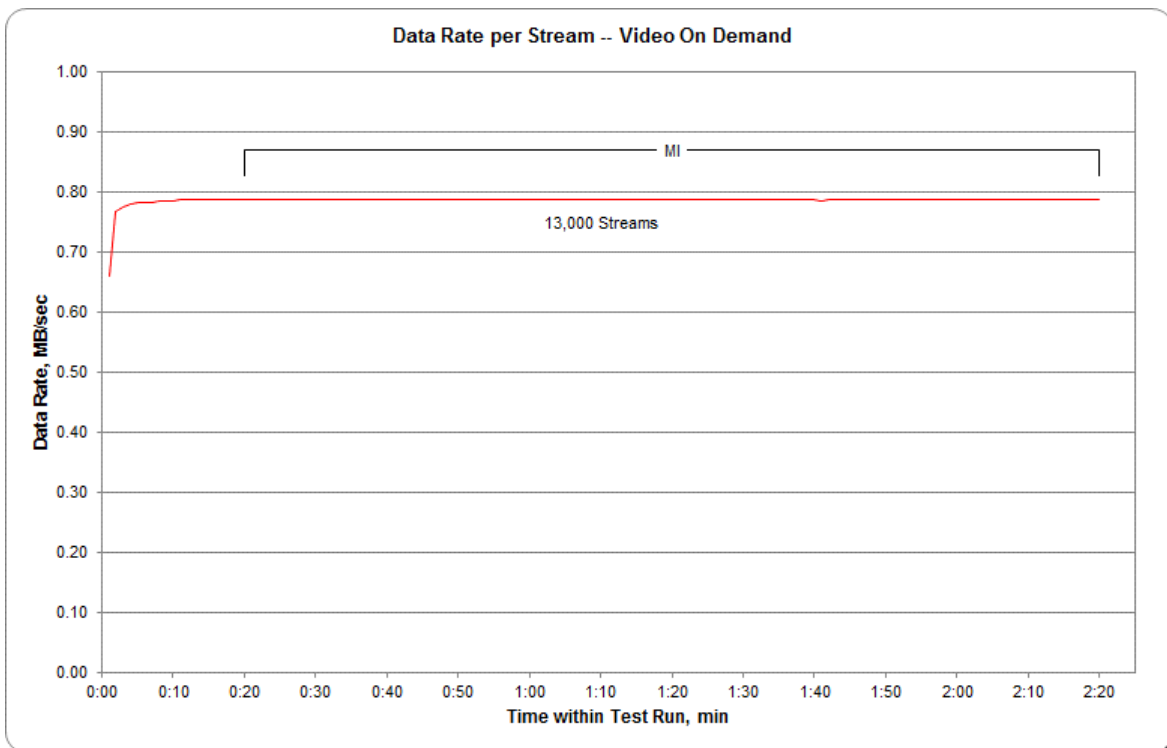
Video on Demand Delivery Test Run Data by Interval

The next two pages include graphs illustrating the average Data Rate, average Data Rate per Stream, Average Response Time and Maximum Response Time produced by the same Test Runs. The table and graphs present the data at sixty second intervals.

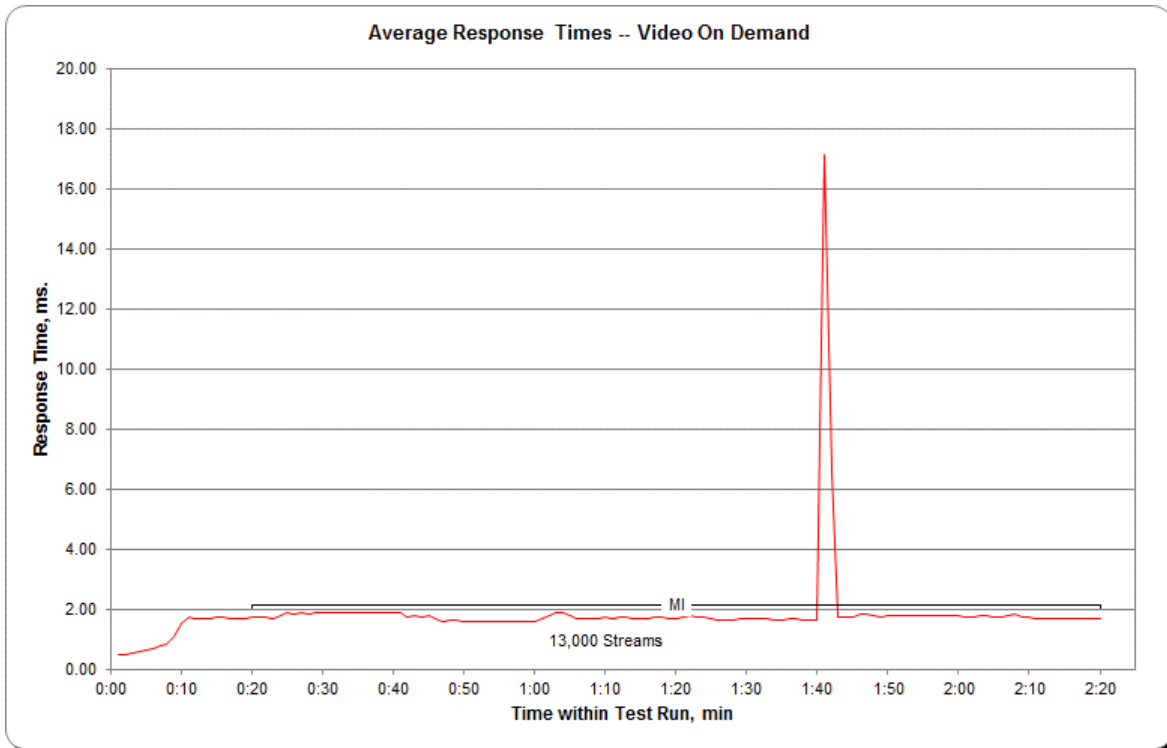
SPC-2 Video on Demand Delivery Average Data Rate Graph



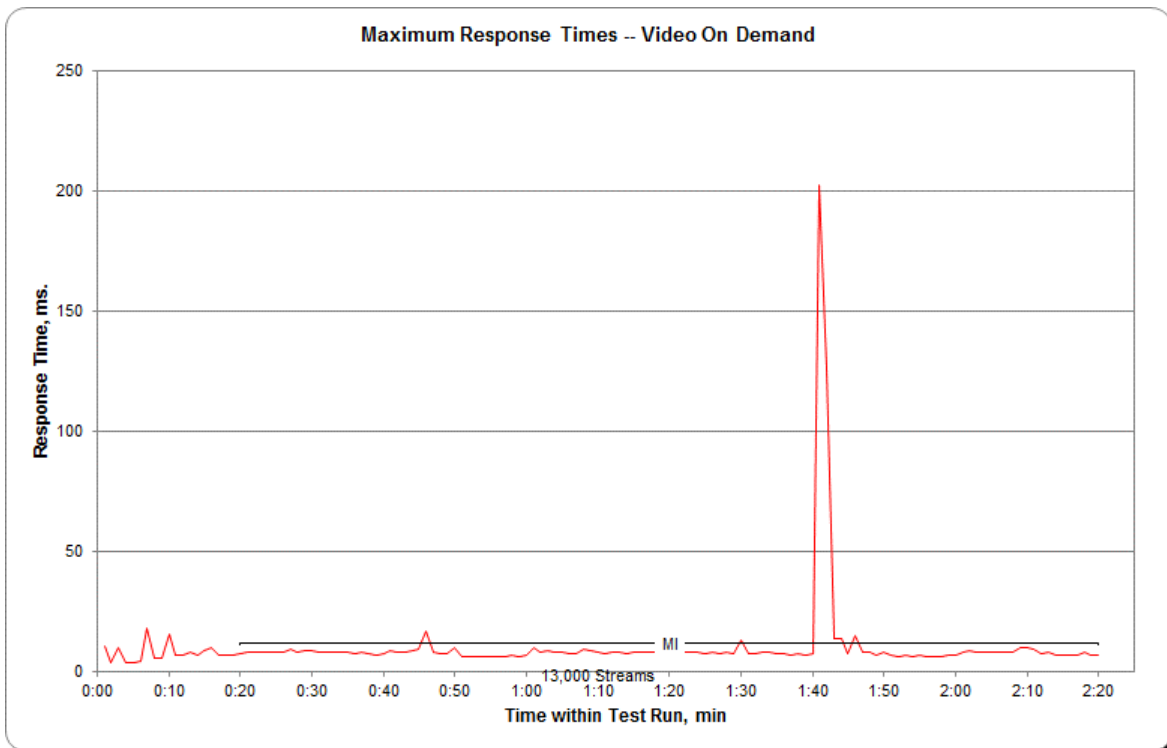
SPC-2 Video on Demand Delivery Average Data Rate per Stream Graph



SPC-2 Video on Demand Delivery Average Response Time Graph



SPC-2 Video on Demand Delivery Maximum Response Time Graph



Data Persistence Test

Clause 7

The Data Persistence Test demonstrates the Tested Storage Configuration (TSC):

- *Is capable of maintain data integrity across a power cycle.*
- *Ensures the transfer of data between Logical Volumes and host systems occurs without corruption or loss.*

The SPC-2 Workload Generator will write a specific pattern at randomly selected locations throughout the Total ASU Capacity (Persistence Test Run 1). The SPC-2 Workload Generator will retain the information necessary to later validate the pattern written at each location.

The Tested Storage Configuration will be shutdown and restarted using a power off/power on cycle at the end of the above sequence of write operations. In addition, any caches employing battery backup must be flushed/emptied.

Restart the TSC, and if the Host System(s) were shutdown and powered off, restart the Host System(s).

The SPC-2 Workload Generator will utilize the retained data from Persistence Test Run 1 to verify (Persistence Run 2) the bit patterns written in Persistence Test Run 1 and their corresponding location.

Clause 10.6.9.4

The Full Disclosure Report will contain the following content for the Data Persistence Test:

1. *A listing of the SPC-2 Workload Generator commands and parameters used to execute each of the Test Runs in the Persistence Test.*
2. *The human readable SPC-2 Test Results File for each of the Test Runs in the Data Persistence Test.*
3. *A table from the successful Persistence Test, which contains the results from the test.*

SPC-2 Workload Generator Commands and Parameters

The SPC-2 Workload Generator commands and parameters for the Persistence Test Runs are documented in [Appendix E: SPC-2 Workload Generator Execution Commands and Parameters](#) on Page [80](#).

Data Persistence Test Results File

A link to the test result file generated from each Data Persistence Test Run is listed below.

[Persistence 1 Test Run \(write phase\) Results File](#)

[Persistence 2 Test Run \(read phase\) Results File](#)

Data Persistence Test Results

Data Persistence Test Results	
Data Persistence Test Number: 1	
Total Number of Logical Blocks Written	823,371
Total Number of Logical Blocks Re-referenced	55,921
Total Number of Logical Blocks Verified	767,450
Total Number of Logical Blocks that Failed Verification	0
Number of Failed I/O Requests in the process of the Test	0

PRICED STORAGE CONFIGURATION AVAILABILITY DATE

Clause 10.6.9

The committed delivery date for general availability (Availability Date) of all products that comprise the Priced Storage Configuration must be reported. When the Priced Storage Configuration includes products or components with different availability dates, the reported Availability Date must be the date at which all components are committed to be available. All availability dates, whether for individual components or for the Priced Storage Configuration as a whole, must be disclosed to a precision of one day.

The Availability Data shall be stated in either a combination of specific alphanumeric month, numeric day and numeric year or as “Currently Available”.

The Infortrend EonStor DS 4024B, as documented in this SPC-2 Full Disclosure Report, is currently available for customer purchase and shipment.

ANOMALIES OR IRREGULARITIES

Clause 10.6.12

The FDR shall include a clear and complete description of any anomalies or irregularities encountered in the course of executing the SPC-2 benchmark that may in any way call into question the accuracy, verifiability, or authenticity of information published in this FDR.

There were no anomalies or irregularities encountered during the SPC-2 Onsite Audit of the Infortrend EonStor DS 4024B.

APPENDIX A: SPC-2 GLOSSARY

“Decimal” (*powers of ten*) Measurement Units

In the storage industry, the terms “kilo”, “mega”, “giga”, “tera”, “peta”, and “exa” are commonly used prefixes for computing performance and capacity. For the purposes of the SPC workload definitions, all of the following terms are defined in “powers of ten” measurement units.

- A kilobyte (KB) is equal to 1,000 (10^3) bytes.
- A megabyte (MB) is equal to 1,000,000 (10^6) bytes.
- A gigabyte (GB) is equal to 1,000,000,000 (10^9) bytes.
- A terabyte (TB) is equal to 1,000,000,000,000 (10^{12}) bytes.
- A petabyte (PB) is equal to 1,000,000,000,000,000 (10^{15}) bytes
- An exabyte (EB) is equal to 1,000,000,000,000,000,000 (10^{18}) bytes

“Binary” (*powers of two*) Measurement Units

The sizes reported by many operating system components use “powers of two” measurement units rather than “power of ten” units. The following standardized definitions and terms are also valid and may be used in this document.

- A kibibyte (KiB) is equal to 1,024 (2^{10}) bytes.
- A mebibyte (MiB) is equal to 1,048,576 (2^{20}) bytes.
- A gibibyte (GiB) is equal to 1,073,741,824 (2^{30}) bytes.
- A tebibyte (TiB) is equal to 1,099,511,627,776 (2^{40}) bytes.
- A pebibyte (PiB) is equal to 1,125,899,906,842,624 (2^{50}) bytes.
- An exbibyte (EiB) is equal to 1,152,921,504,606,846,967 (2^{60}) bytes.

SPC-2 Data Repository Definitions

Total ASU Capacity: The total storage capacity read and written in the course of executing the SPC-2 benchmark.

Application Storage Unit (ASU): The logical interface between the storage and SPC-2 Workload Generator. The ASU is implemented on one or more Logical Volume.

Logical Volume: The division of Addressable Storage Capacity into individually addressable logical units of storage used in the SPC-2 benchmark. Each Logical Volume is implemented as a single, contiguous address space.

Addressable Storage Capacity: The total storage (sum of Logical Volumes) that can be read and written by application programs such as the SPC-2 Workload Generator.

Configured Storage Capacity: This capacity includes the Addressable Storage Capacity and any other storage (parity disks, hot spares, etc.) necessary to implement the Addressable Storage Capacity.

Physical Storage Capacity: The formatted capacity of all storage devices physically present in the Tested Storage Configuration (TSC).

Data Protection Overhead: The storage capacity required to implement the selected level of data protection.

Required Storage: The amount of Configured Storage Capacity required to implement the Addressable Storage Configuration, excluding the storage required for the ASU.

Global Storage Overhead: The amount of Physical Storage Capacity that is required for storage subsystem use and unavailable for use by application programs.

Total Unused Storage: The sum of unused storage capacity within the Physical Storage Capacity, Configured Storage Capacity, and Addressable Storage Capacity.

SPC-2 Data Protection Levels

Protected 1: The single point of failure of any *storage device* in the configuration will not result in permanent loss of access to or integrity of the SPC-2 Data Repository.

Protected 2: The single point of failure of any *component* in the configuration will not result in permanent loss of access to or integrity of the SPC-2 Data Repository.

SPC-2 Test Execution Definitions

Completed I/O Request: An I/O Request with a Start Time and a Completion Time (see [“I/O Completion Types”](#) illustrated below).

Completion Time: The time recorded by the Workload Generator when an I/O Request is completed by the Tested Storage Configuration (TSC) as signaled by System Software.

Data Rate: The data volume, in MB, transferred by all Measured I/O Requests in an SPC-2 Test Run divided by the length of the Test Run in seconds.

Failed I/O Request: Any I/O Request issued by the SPC-2 Workload Generator that meets one of the following conditions (see [“I/O Completion Types”](#) illustrated below):

- The I/O Request was signaled as failed by System Software.
- The I/O Request started within the Measurement Interval, but did not complete prior to the end of the appropriate Run-Out period..
- The I/O Request started within the Run-Out period, but did not complete prior to the end of the appropriate Ramp-Down period.

I/O Request Throughput: The total number of Measured I/O Requests in an SPC-2 Test Run divided by the duration of the Measurement Interval in seconds.

Measured I/O Request: A Completed I/O Request that begins (Start Time) within a Measurement Interval and completes (Completion Time) prior to the end of the appropriate Ramp Down (see [“I/O Completion Types”](#) illustrated below).

Measurement Interval: A specified, contiguous period of time, after the TSC has reached Steady State, when data is collected by the Workload Generator to produce the test results for a SPC-2 Test Run (see [“SPC-2 Test Run Components”](#) illustrated below, *Test Run 1: T_2-T_3 and Test Run 2: T_7-T_8*).

Outstanding I/O Requests: The Outstanding I/O Requests parameter specifies the maximum number of concurrent I/O Requests, associated with a give Stream, which have been issued but not yet completed. (*Clause 3.4.4 of the SPC-2 Benchmark Specification*).

Ramp-Down: A specified, contiguous period of time in which the TSC is required to complete I/O Requests started but not completed during the preceding Run-Out period. Ramp-Down begins at the end of the preceding Run-Out period (see [“SPC-2 Test Run Components”](#) illustrated below, *Test Run 1: T_4-T_5 and Test Run 2: T_9-T_{10}*). The Workload Generator will not submit any I/O Requests during the Ramp-Down.

Ramp-Up: A specified, contiguous period of time required for the Benchmark Configuration (BC) to produce Steady State throughput after the Workload Generator begins submitting I/O Requests to the TSC for execution. The Ramp-Up period ends at the beginning of the Measurement Interval (see [“SPC-2 Test Run Components”](#) illustrated below, *Test Run 1: T_0-T_2 and Test Run 2: T_5-T_7*).

Response Time: The Response Time of a Measured I/O Request is its Completion Time minus its Start Time.

Run-Out: A specified, contiguous period of time in which the TSC is required to complete I/O Requests started but not completed during the preceding Measurement Interval. The Run-Out period begins at the end of the preceding Measurement Interval and is a component of the Steady State period (see [“SPC-2 Test Run Components”](#) illustrated below, *Test Run 1: T_3-T_4 and Test Run 2: T_9-T_{10}*). The Workload Generator will continue to submit I/O Requests at the Test Run’s specified rate during the Run-Out period.

Start Time: The time recorded by the Workload Generator when an I/O Request is submitted, by the Workload Generator, to the System Software for execution on the TSC.

Steady State: The period during which the workload presented to the TSC by the SPC-2 Workload Generator is constant and the resulting TSC I/O Request Throughput is both consistent and sustainable. The Steady State period includes both the Measurement Interval and Run-Out periods (see [“SPC-2 Test Run Components”](#) illustrated below, *Test Run 1: T_1-T_4 and Test Run 2: T_6-T_9*).

Steady State is achieved only after caches in the TSC have filled and as a result the I/O Request Throughput of the TSC has stabilized.

Stream: A collection of Stream Segments that started within a Test Run.

Stream Segment: A sequentially organized pattern of I/O requests, which transfers a contiguous range of data.

Test: A collection of Test Phases and or Test Runs sharing a common objective.

Test Phase: A collection of one or more SPC-2 Test Runs sharing a common objective and intended to be run in a specific sequence.

Test Run: The execution of SPC-2 that produces specific SPC-2 test results. SPC-2 Test Runs have specified, measured Ramp-Up, Measurement Interval, Run-Out and Ramp-Down periods. "[SPC-2 Test Run Components](#)" (*see below*) illustrates the Ramp-Up, Steady State, Measurement Interval, Run-Out, and Ramp-Down components contained in two uninterrupted SPC-2 Test Runs (*Test Run 1: T_0-T_5 and Test Run 2: T_5-T_{10}*).

Test Run Sequence: A related sequence of Large File Processing (LFP) or Large Database Query (LDQ) Test Runs. Each Test Run Sequence will consist of five Test Runs, which vary the number of Streams as follows:

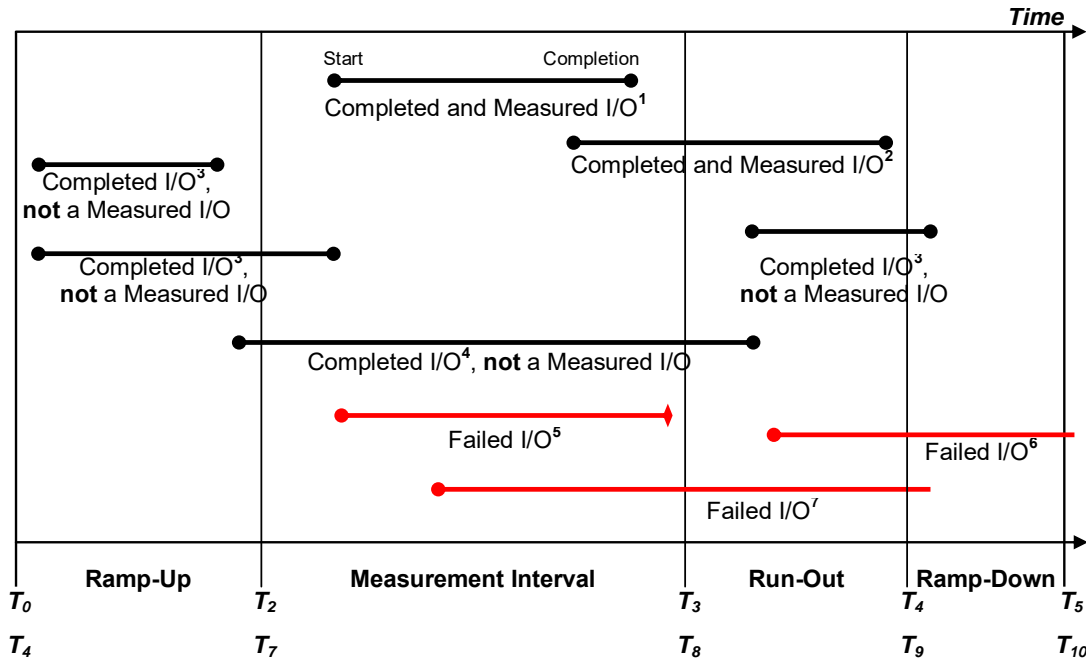
- Test Run 1: Maximum number of Streams, which is selected by the Test Sponsor
- Test Run 2: 50% of the maximum number of Streams used in Test Run 1.
- Test Run 3: 25% of the maximum number of Streams used in Test Run 1.
- Test Run 4: 12.5% of the maximum number of Streams used in Test Run 1.
- Test Run 5: 1 Stream.

Each of the five Test Runs in a Test Run Sequence will share the same attributes with the exception of the number of Streams. For example:

- Large File Processing, Read, 1024 KiB Transfer Size: Maximum Streams
- Large File Processing, Read, 1024 KiB Transfer Size: 50% of Maximum Streams
- Large File Processing, Read, 1024 KiB Transfer Size: 25% of Maximum Streams
- Large File Processing, Read, 1024 KiB Transfer Size: 12.5% of Maximum Streams
- Large File Processing, Read, 1024 KiB Transfer Size: 1 Stream

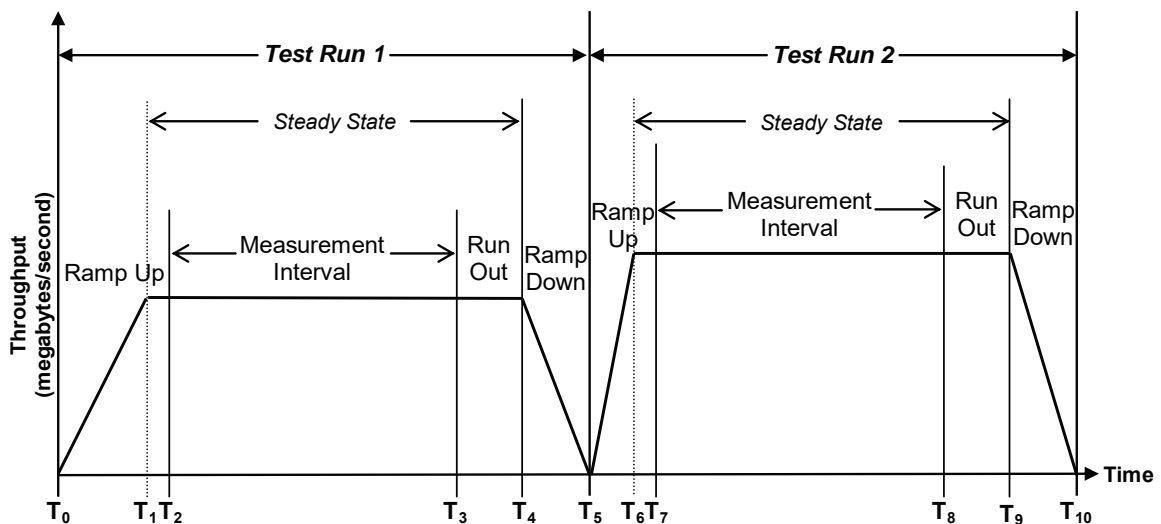
Transfer Size: The Transfer Size parameter specifies the number of bytes in KiB to transfer. (*Clause 3.4.7 of the SPC-2 Benchmark Specification*)

I/O Completion Types



Completed and Measured I/O¹: I/O started and completed within the Measurement Interval.
Completed and Measured I/O²: I/O started within the Measurement Interval and completed within Ramp Down.
Completed I/O³: I/O started before or after the Measurement Interval – not measured.
Completed I/O⁴: I/O started before and completed after the Measurement Interval – not measured.
Failed I/O⁵: Signaled as failed by System Software.
Failed I/O⁶: I/O did not complete prior to the end of Ramp-Down.
Failed I/O⁷: I/O did not complete prior to the end of Run-Out.

SPC-2 Test Run Components



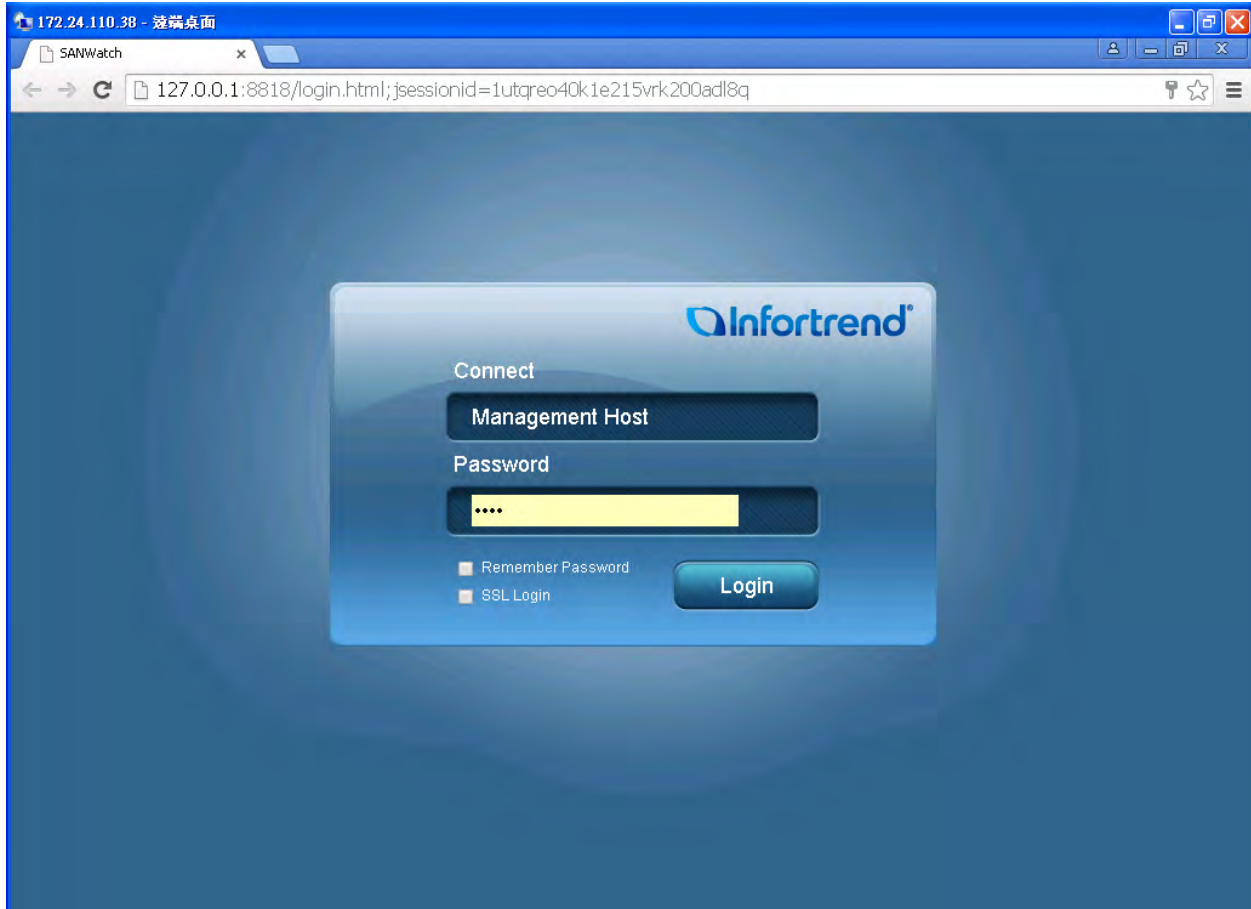
APPENDIX B: CUSTOMER TUNABLE PARAMETERS AND OPTIONS

There were no customer tunable parameter or options changed from their default values.

APPENDIX C: TESTED STORAGE CONFIGURATION (TSC) CREATION

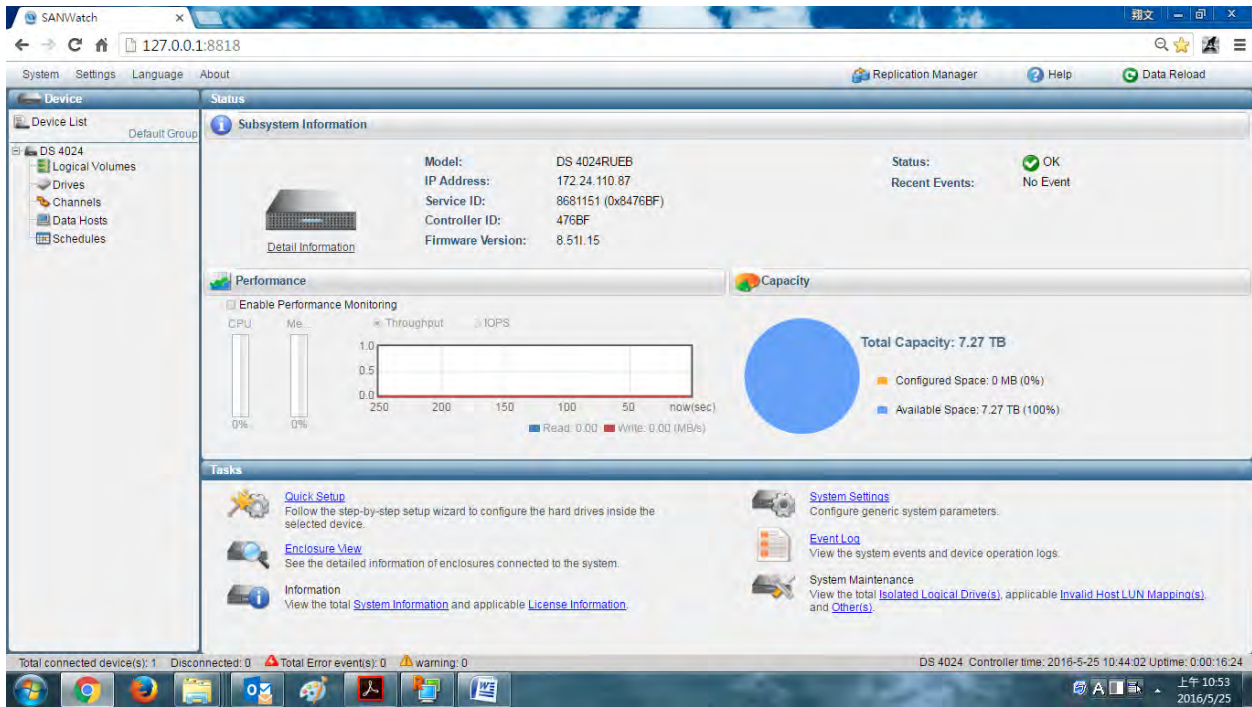
Step 1:

Launch Infortrend's SANWatch on the Master Host system, or any other server than is configured on the same network subnet as the TSC, to begin the TSC creation and configuration process.



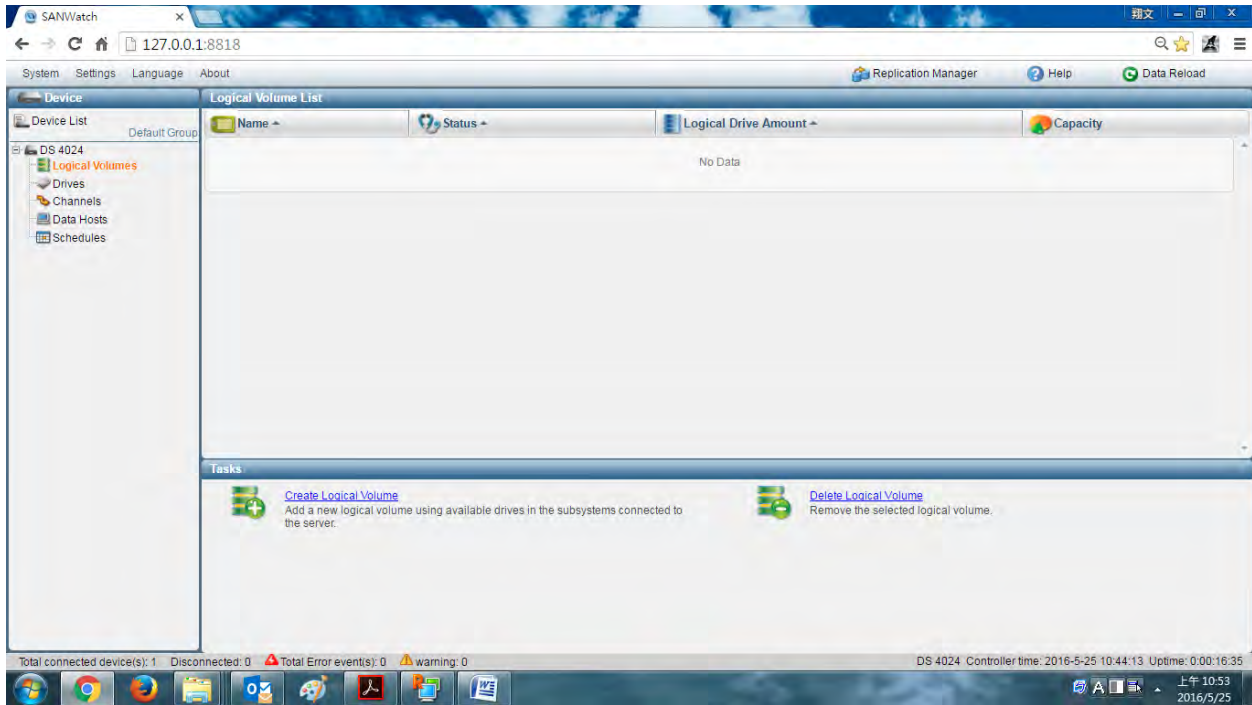
Step 2:

Select the EonStor DS 4024 and check its status.



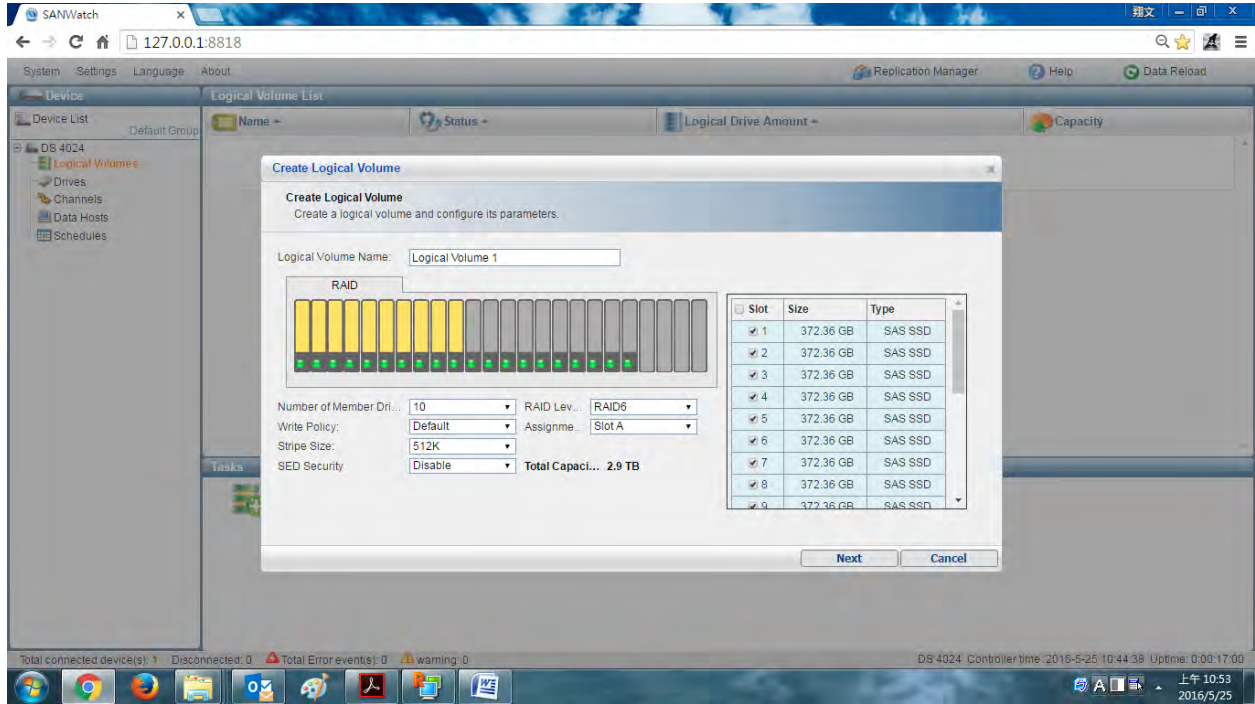
Step 3:

Select **Logical Volumes** and click **Create Logical Volume**.



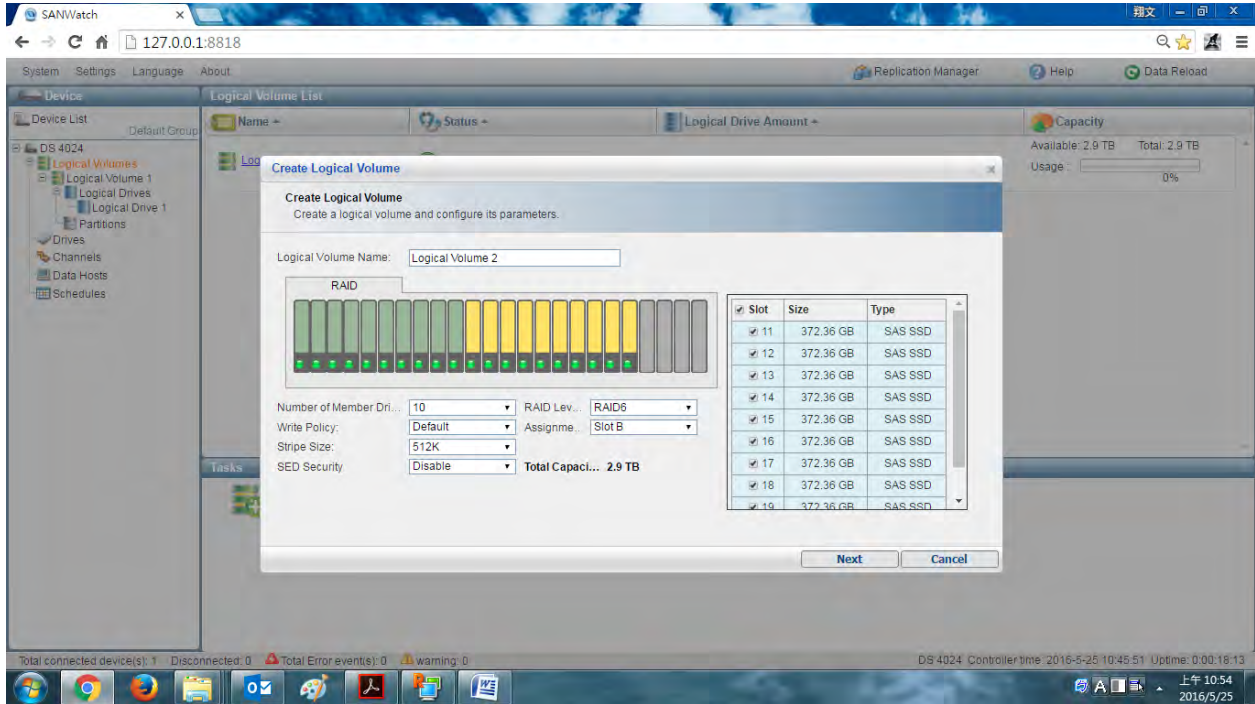
Step 4:

Create **Logical Volume 1**, assign to **Slot A (Controller A)**, change the **Stripe Size** to **512K** and select 10 SAS SSDs as the member drives using RAID-6 in order to offer a higher level of data protection. Then click **Next**.



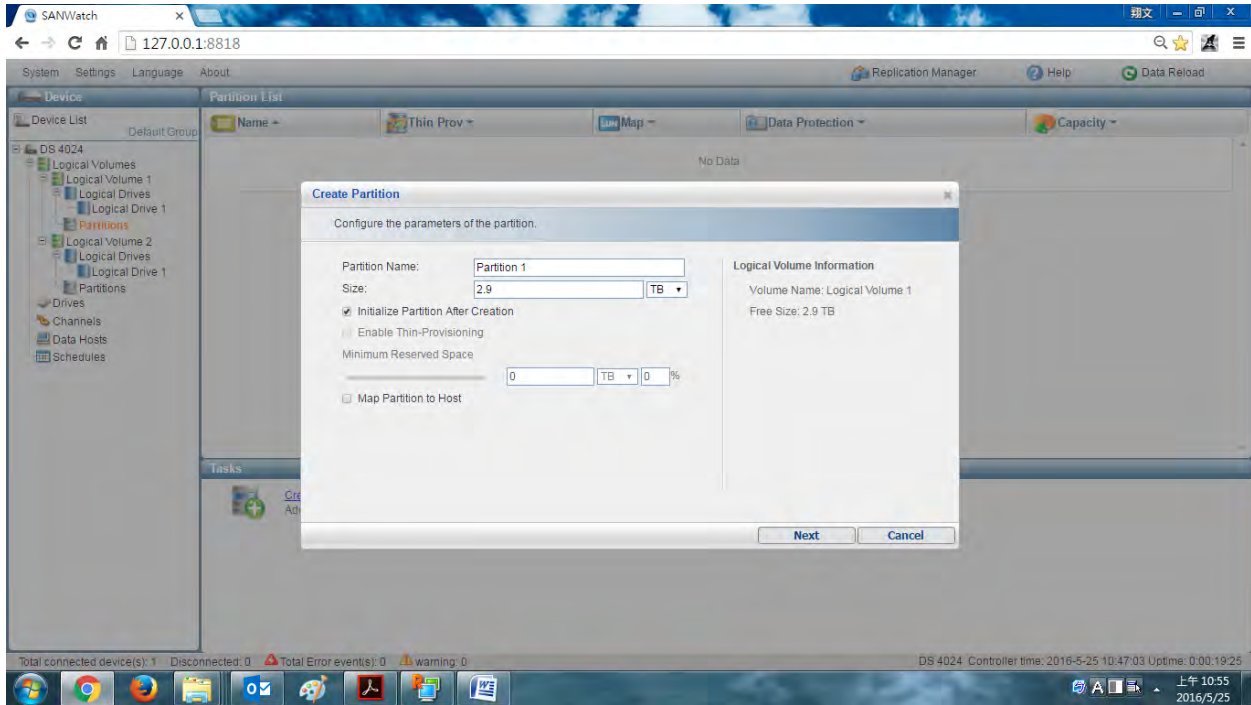
Step 5:

Create **Logical Volume 2**, assign to **Slot B (Controller B)**, change the **Stripe Size** to **512K** and select the remaining 10 SAS SSDs as the member drives using RAID-6 in order to offer a higher level of data protection. Then click **Next**.



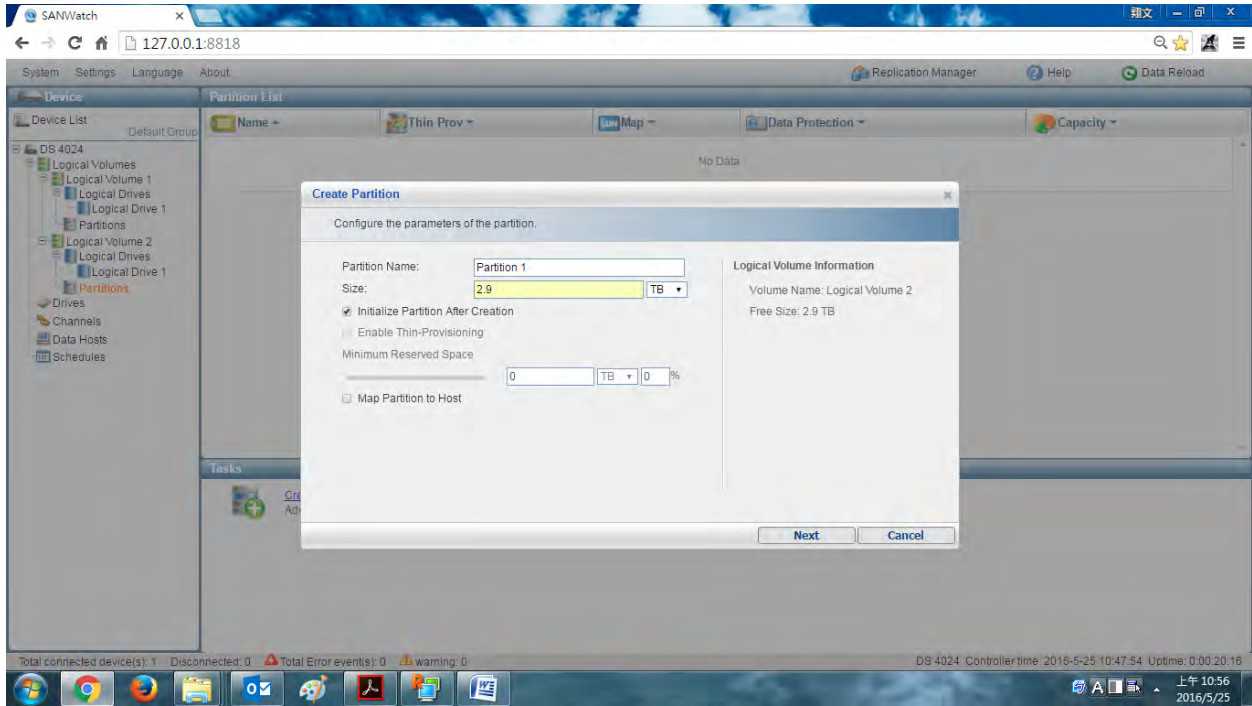
Step 6:

Select **Logical Volumes/Partitions** and click **Create Partition** and set the partition size to **2.9TB** to create a partition in **Logical Volume 1**. Then click **Next**.



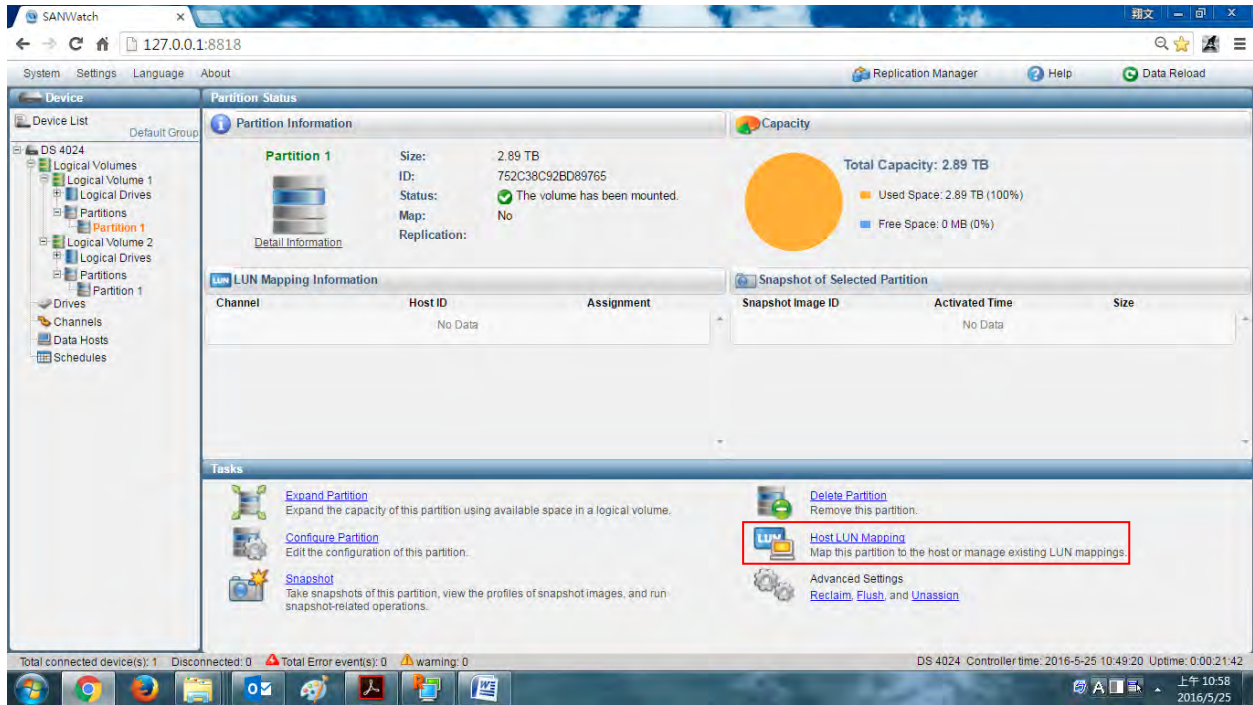
Step 7:

Repeat [Step 6](#) to create an identical partition in **Logical Volume 2**.



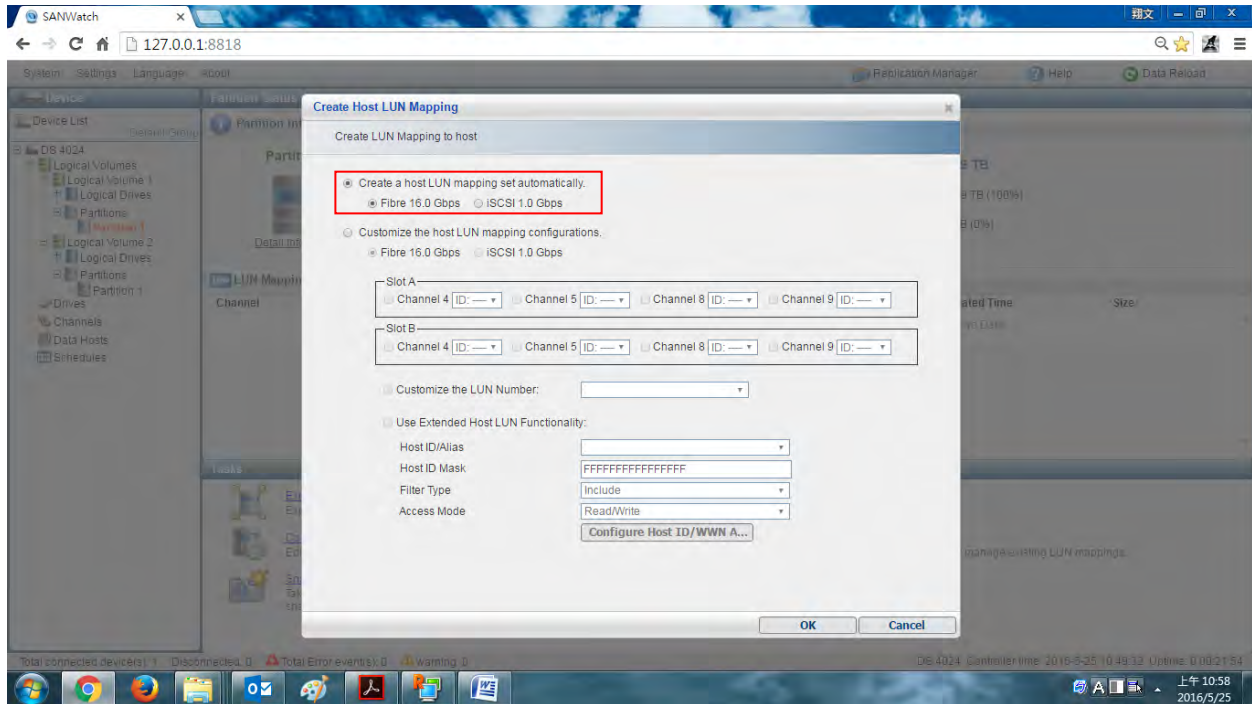
Step 8:

Click **Host LUN Mapping** to map the first partition, to the two Host Systems.



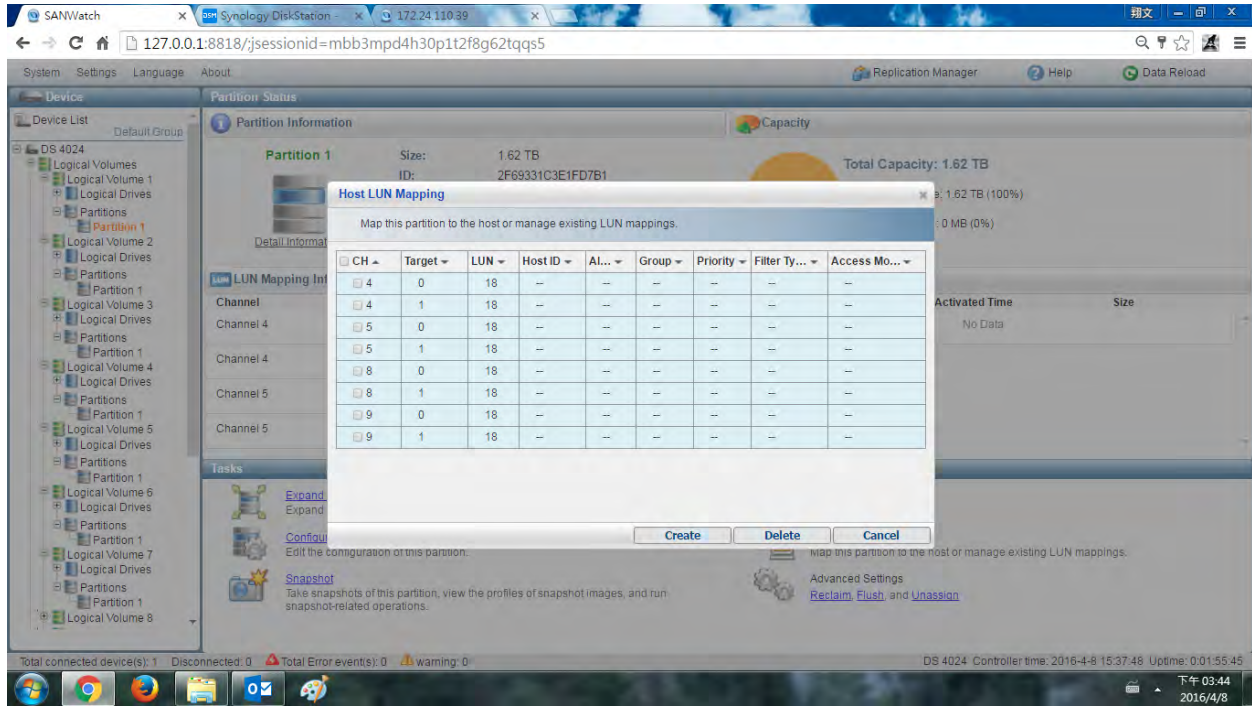
Step 9:

Select **Create a host LUN mapping set automatically** and **Fibre 16.0 Gbps**. Then click **OK**.

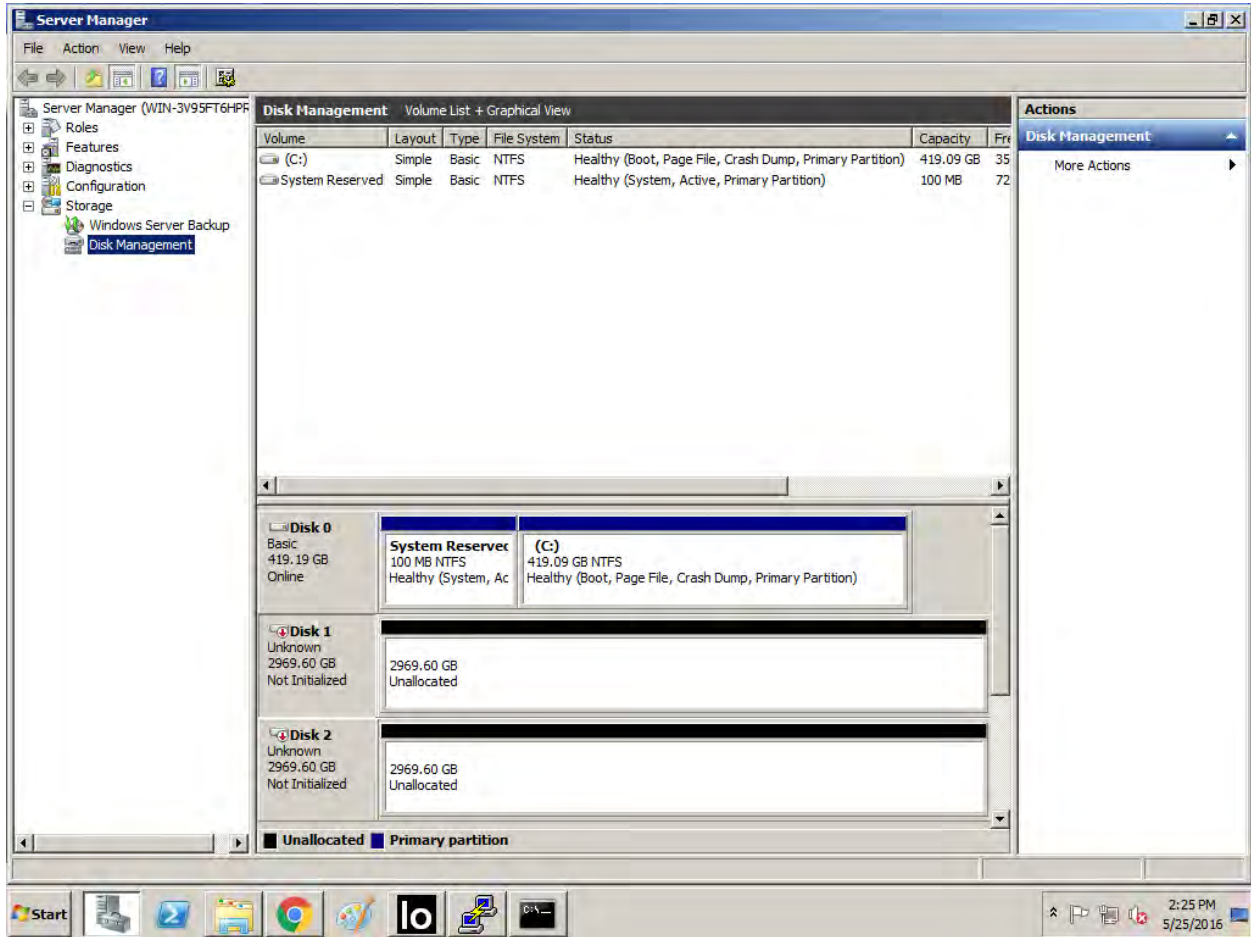


Step 10:

Repeat [Step 8](#) and [Step 9](#) to map the second partition.



Step 11: On each Host System, start the **Windows Server Management** utility and click **Disk Management** to display the configured Windows “disks”. Verify the above two mapped partitions are correctly listed as new “disks”.



APPENDIX D: SPC-2 WORKLOAD GENERATOR STORAGE COMMANDS AND PARAMETER FILES

ASU Pre-Fill

The ASU pre-fill command and parameter file is listed below.

```
compratio=1
sd=default,host=localhost,size=3042100m
sd=sd1,lun=\\.\PhysicalDrive1,threads=4
sd=sd2,lun=\\.\PhysicalDrive2,threads=4

wd=wd1,sd=sd*,xfersize=256k,readpct=0,seekpct=-1
rd=rd1,wd=wd*,elapsed=36000,interval=10,iorate=max
```

Common Commands/Parameters – LFP and LDQ. Tests

The following command/parameter lines appear in each of the command and parameter files for the Large File Processing (LFP) and Large Database Query (LDQ) Tests. The command lines are only listed below to eliminate redundancy.

```
* Master Host Definition Parameter
host=localhost,spc2="c:\spc\spc2",jvms=1,maxstreams=150

* Remote Host Definition Parameter
host=(172.24.111.136,remotel),spc2="c:\spc\spc2",shell=spc2,jvms=1,maxstreams=150

* Storage Definition Parameters - Master Host
sd=default,host=localhost,size=3042100m

sd=sd1,lun=\\.\physicalDrive1
sd=sd2,lun=\\.\physicalDrive2

* Storage Definition Parameters - Remote Host
sd=default,host=remotel,size=3042100m
sd=sd1,lun=\\.\physicalDrive1
sd=sd2,lun=\\.\physicalDrive2

* Global Test Run Attribute Parameter Entries
maxlatestart=0
reportinginterval=5
segmentlength=512m
```

Large File Processing Test (LFP)

* Large File Processing (LFP)

[common commands](#)

```
rd=default,rampup=180,periods=90,measurement=180,runout=45,rampdown=15,buffers=1
```

```
* LFP, "write" Test Phase
rd=default,rdpct=0,xfersize=1024k
rd=TR1_SPC-2-FP2.0,streams=96
rd=TR2_SPC-2-FP2.0,streams=48
rd=TR3_SPC-2-FP2.0,streams=24
rd=TR4_SPC-2-FP2.0,streams=12
rd=TR5_SPC-2-FP2.0,streams=1
```

```
rd=default,rdpct=0,xfersize=256k
rd=TR6_SPC-2-FP2.0,streams=48
rd=TR7_SPC-2-FP2.0,streams=24
rd=TR8_SPC-2-FP2.0,streams=12
rd=TR9_SPC-2-FP2.0,streams=6
rd=TR10_SPC-2-FP2.0,streams=1
```

```
* LFP, "read-write" Test Phase
rd=default,rdpct=50,xfersize=1024k
rd=TR11_SPC-2-FP2.0,streams=24
rd=TR12_SPC-2-FP2.0,streams=12
rd=TR13_SPC-2-FP2.0,streams=6
rd=TR14_SPC-2-FP2.0,streams=3
rd=TR15_SPC-2-FP2.0,streams=1
```

```
rd=default,xfersize=256k
rd=TR16_SPC-2-FP2.0,streams=96
rd=TR17_SPC-2-FP2.0,streams=48
rd=TR18_SPC-2-FP2.0,streams=24
rd=TR19_SPC-2-FP2.0,streams=12
rd=TR20_SPC-2-FP2.0,streams=1
```

```
* LFP, "read" Test Phase
rd=default,rdpct=100,xfersize=1024k
rd=TR21_SPC-2-FP2.0,streams=12
rd=TR22_SPC-2-FP2.0,streams=6
rd=TR23_SPC-2-FP2.0,streams=3
rd=TR24_SPC-2-FP2.0,streams=2
rd=TR25_SPC-2-FP2.0,streams=1
```

```
rd=default,rdpct=100,xfersize=256k
rd=TR26_SPC-2-FP2.0,streams=48
rd=TR27_SPC-2-FP2.0,streams=24
rd=TR28_SPC-2-FP2.0,streams=12
rd=TR29_SPC-2-FP2.0,streams=6
rd=TR30_SPC-2-FP2.0,streams=1
```

Large Database Query Test (LDQ)

* SPC-2 Host Configuration

[common commands](#)

```
rd=default,rdpct=99,rampup=180,periods=90,measurement=180,runout=45,rampdown=15
```

```
* LDQ, 1024 KiB Test Phase
rd=default,xfersize=1024k,buffers=4
rd=TR1_SPC-2-DQ,streams=24
rd=TR2_SPC-2-DQ,streams=12
rd=TR3_SPC-2-DQ,streams=6
rd=TR4_SPC-2-DQ,streams=3
rd=TR5_SPC-2-DQ,streams=1
```

```
rd=default,buffers=1
rd=TR6_SPC-2-DQ,streams=24
rd=TR7_SPC-2-DQ,streams=12
rd=TR8_SPC-2-DQ,streams=6
rd=TR9_SPC-2-DQ,streams=3
rd=TR10_SPC-2-DQ,streams=1
```

```
* LDQ, 64 KiB Test Phase
rd=default,xfersize=64k,buffers=4
rd=TR11_SPC-2-DQ,streams=48
rd=TR12_SPC-2-DQ,streams=24
rd=TR13_SPC-2-DQ,streams=12
rd=TR14_SPC-2-DQ,streams=6
rd=TR15_SPC-2-DQ,streams=1
```

```
rd=default,buffers=1
rd=TR16_SPC-2-DQ,streams=96
rd=TR17_SPC-2-DQ,streams=48
rd=TR18_SPC-2-DQ,streams=24
rd=TR19_SPC-2-DQ,streams=12
rd=TR20_SPC-2-DQ,streams=1
```

Video on Demand Delivery (VOD)

```
host=localhost,spc2="c:\spc\spc2",jvms=6,maxstreams=2000
host=(172.24.111.136,remotel),spc2="c:\spc\spc2",jvms=6,maxstreams=2000,shell=spc2

sd=default,host=localhost,size=3042100m
sd=sd1,lun=\\.\PhysicalDrive1
sd=sd2,lun=\\.\PhysicalDrive2

sd=default,host=remotel
sd=sd1,lun=\\.\PhysicalDrive1
sd=sd2,lun=\\.\PhysicalDrive2

maxlatestart=0
videosegmentduration=1200
maxlatevod=0
reportinginterval=5
rd=default,rampup=1200,periods=600,measurement=7200,runout=45,rampdown=15
rd=TR1_SPC-2-VOD11.0,streams=13000,buffers=8
```

SPC-2 Persistence Test Run 1 (*write phase*)

```
host=localhost,spc2="c:\spc\spc2",jvms=1,maxstreams=100
host=(172.24.111.136,remotel),spc2="c:\spc\spc2",jvms=1,maxstreams=100,shell=spc2
sd=default,host=localhost,size=3042100m

sd=sd1,lun=\\.\PhysicalDrive1
sd=sd2,lun=\\.\PhysicalDrive2

sd=default,host=remotel
sd=sd1,lun=\\.\PhysicalDrive1
sd=sd2,lun=\\.\PhysicalDrive2

reportinginterval=5
segmentlength=512m
rd=default,rampup=180,periods=90,measurement=300,runout=0,rampdown=0,buffers=1
rd=default,rdpct=0,xfersize=1024k
rd=TR1-96s_SPC-2-persist-w,streams=96
```

SPC-2 Persistence Test Run 2 (*read phase*)

```
host=localhost,spc2="c:\spc\spc2",jvms=1,maxstreams=100
host=(172.24.111.136,remotel),spc2="c:\spc\spc2",jvms=1,maxstreams=100,shell=spc2
sd=default,host=localhost,size=3042100m

sd=sd1,lun=\\.PhysicalDrive1
sd=sd2,lun=\\.PhysicalDrive2

sd=default,host=remotel
sd=sd1,lun=\\.PhysicalDrive1
sd=sd2,lun=\\.PhysicalDrive2

maxlatestart=1
reportinginterval=5
segmentlength=512m
maxpersistenceerrors=10
rd=default,buffers=1,rdpct=100,xfersize=1024k
rd=TR1-96s_SPC-2-persist-r
```

APPENDIX E: SPC-2 WORKLOAD GENERATOR EXECUTION COMMANDS AND PARAMETERS

ASU Pre-Fill, Large File Processing (LFP) Test, Large Database Query (LDQ) Test, Video on Demand Delivery (VOD) Test and SPC-2 Persistence Test Run 1 (*write phase*)

The connection between the Master Host System and remote Host System was started manually, via the **RemoteStart** command, as the first step I the benchmark execution sequence.

The script, [SPC2.bat](#), was invoked to complete the following in an uninterrupted execution sequence:

- The required ASU pre-fill
- Initialize the SPC-1 Logical Volumes
- Execute the following:
 - Large File Processing (LFP) Test
 - Large Database Query (LDQ) Test
 - Video on Demand Delivery (VOD) Test
 - SPC-2 Persistence Test Run 1 (*write phase*)

The connection between the Master Host System and remote Host System was started manually, via the **RemoteStart** command, after the required TSC power off/power on cycle.

The script, [Persist2_run.bat](#), was then invoked to complete the SPC-2 Persistence Test Run 2 (*read phase*).

The two execution scripts are listed on the following page.

SPC2.bat

```
taskkill /im java.exe /f

@echo off
echo "ASU prefill started....."
call C:\vdbench50401\vdbench.bat -f spc2_prefill.parm -o prefill.out
echo "ASU prefill complete....."

cd C:\spc\spc2

java -Xmx1536m -Xms512m -cp c:\spc\spc2 vdbench -w SPC2 -f
C:\Users\Administrator\Desktop\SPC-2_host\LFP.parm -o
C:\Users\Administrator\Desktop\SPC-2_host\init_output -init
java -Xmx1536m -Xms512m -cp c:\spc\spc2 vdbench -w SPC2 -f
C:\Users\Administrator\Desktop\SPC-2_host\LFP.parm -o
C:\Users\Administrator\Desktop\SPC-2_host\LFP.lfp
java -Xmx1536m -Xms512m -Xss96k -cp c:\spc\spc2 vdbench -w SPC2 -f
C:\Users\Administrator\Desktop\SPC-2_host\LDQ.parm -o
C:\Users\Administrator\Desktop\SPC-2_host\LDQ.ldq
java -Xmx1536m -Xms512m -cp c:\spc\spc2 vdbench -w SPC2 -f
C:\Users\Administrator\Desktop\SPC-2_host\VOD.parm -o
C:\Users\Administrator\Desktop\SPC-2_host\VOD.vod
java -Xmx1536m -Xms512m -cp c:\spc\spc2 vdbench -w SPC2 -f
C:\Users\Administrator\Desktop\SPC-2_host\Persist1.parm -o
C:\Users\Administrator\Desktop\SPC-2_host\Persist1

echo "Capture a storage profile between the persistence runs....."

pause
```

Persist2_run.bat

```
taskkill /im java.exe /f

java -Xmx1536m -Xms512m -cp c:\spc\spc2 vdbench -w SPC2 -f
C:\Users\Administrator\Desktop\SPC-2_host\Persist2.parm -o
C:\Users\Administrator\Desktop\SPC-2_host\Persist2

echo "Capture a storage profile at the end of the run....."

pause
```