

Inspur HF18000G5-I

SPC-1 IOPS™	23,001,502	SPC-1 Price Performance	\$375.56/SPC-1 KIOPS™
SPC-1 IOPS Response Time	0.294 ms	SPC-1 Total System Price	\$8,638,347.84
SPC-1 Overall Response Time	0.246 ms	SPC-1 Overall Discount	74.95%
		Currency / Target Country	USD / China
		Availability Date	July 25, 2021

Extensions

☆ SPC-1 Data Reduction	NA
☆ SPC-1 Encryption	NA
☆ SPC-1 NDU	NA
☆ SPC-1 Synchronous Replication	NA
☆ SPC-1 Snapshot	NA

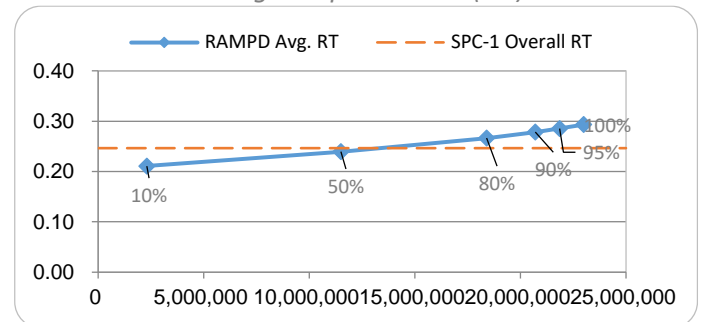
Storage Metrics

SPC-1 Data Protection Level	Protected 2
SPC-1 Physical Storage Capacity	957,600 GB
SPC-1 ASU Capacity	343,597 GB
SPC-1 ASU Price	\$25.15/GB

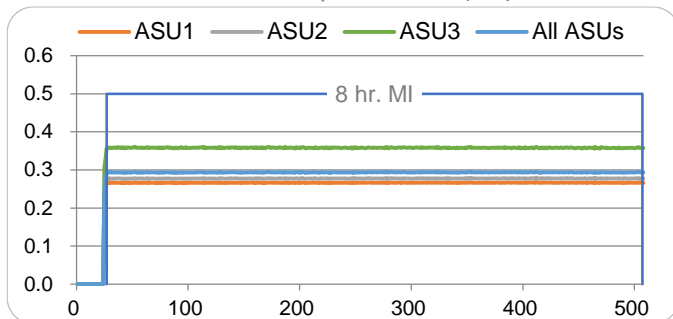
Priced Storage Configuration Summary

- 122 Emulex 31002 2-port 16 Gb FC HBAs
- 16 Inspur HF18000G5 Storage Nodes
- 32 Controllers (2 per node)
- 49,152 GB Total Cache (1,536 per controller)
- 384 Total Front-End Ports (320 used)
- 480 1.92 TB NVMe SSDs
- 96 375 GB NVMe Optane SSDs
- 2 FS9620 32 Gb FC Switches
- 144 Total RUs

RAMPD Average Response Time (ms) vs. IOPS



SUSTAIN Response Time (ms)



RAMPD_100 Response Time (ms)

