



SPC Benchmark 1™

Executive Summary



Inspur AS2200G2

SPC-1 IOPS™	369,997	SPC-1 Price Performance	\$75.77/SPC-1 KIOPS™
SPC-1 IOPS Response Time	0.458 ms	SPC-1 Total System Price	\$28,032.86
SPC-1 Overall Response Time	0.282 ms	SPC-1 Overall Discount	77.21%
		Currency / Target Country	USD / China
		Availability Date	August 30, 2020

Extensions

☆ SPC-1 Data Reduction	NA
☆ SPC-1 Encryption	NA
☆ SPC-1 NDU	NA
☆ SPC-1 Synchronous Replication	NA
☆ SPC-1 Snapshot	NA

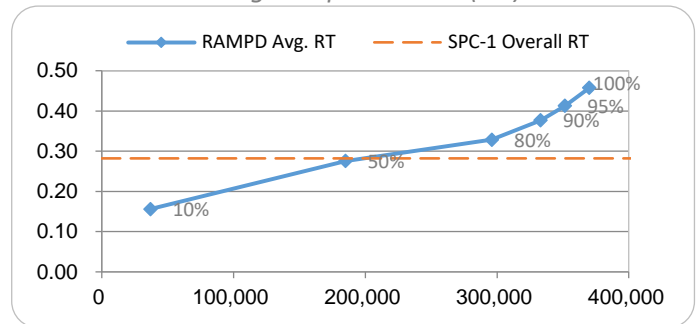
Storage Metrics

SPC-1 Data Protection Level	Protected 2
SPC-1 Physical Storage Capacity	10,000 GB
SPC-1 ASU Capacity	3,543 GB
SPC-1 ASU Price	\$7.92/GB

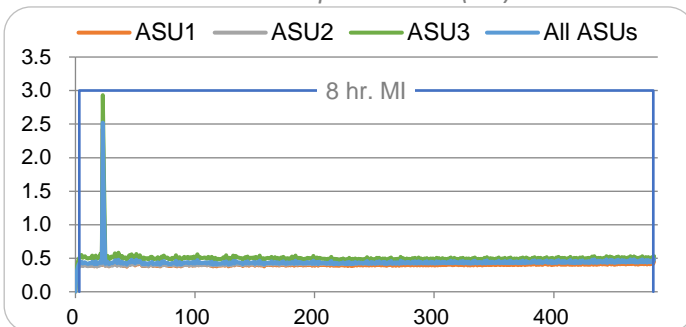
Priced Storage Configuration Summary

- 2 Emulex LPe16002 2-port FC HBA
- 1 Inspur AS2200G2 Enclosure
- 2 Controllers
- 64 GB Total Cache
- 4 16 Gb FC Ports
- 25 400 Gb SSDs
- 2 Total RUs

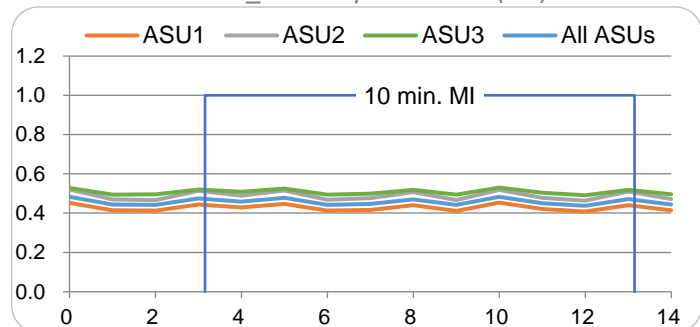
RAMPD Average Response Time (ms) vs. IOPS



SUSTAIN Response Time (ms)



RAMPD_100 Response Time (ms)



SPC Benchmark 1™ Specification Revision v3.9.1
 SPC Benchmark 1™ Workload Generator Revision v3.0.2-1-g823a

Submitted for Review October 14, 2020
 Submission Details www.storageperformance.org/r/A32019